

Kwor na, Yat na, Gwok na

BUK CING MA MIYO NGEK IKOM TWO JONYO/GENGO AONA APIO, GWOK KI NONGO YAT

TABLE OF CONTENTS

PWONY ME GENGO, GWOKE KI NONGO YAT KWIDI TWO JONYO/AONA APIO

Lok ikom miti pa buk man	1
Iniang ikom kwidi two jonyo?.....	3
Kit ma kobo kwede	5
Yoo ma kwidi two jonyo pe romo kobo kede?.....	9
Dano romo kwoke nining ki ikom kwid two jonyo.....	11
Ngeyo kit ma remo ni tye kwede	15
Kit me kwor ki kwidi two jonyo	17
Gengo kobo pa kwidi two jonyo ma ikom min latin bot latin	19
Nongo yat kwidi two jonyo (Yat kwidi two jonyo /ARVS).....	31

Ayupe nining pi nongo yat kwidi two jonyo dok kit kony ango ma aromo mitone	33
Aromo konyo nining latina ma tye iyat?.....	35
Roto yotkom pa ngat ma tye ki kwidi two jonyo.	37
Roto ka yat na tye ka tic	41
Ngo mukene ma mite pi dano ma tye ka kwor ki kwidi two jonyo?	45
Aromo nongo nining kony mukene mapat ki nongo yat.....	47
Yoo mene ma dok atye kwede?.....	51
Cwak na pi nongo yat	53
Ngo ma romo bedo ariya inongo yata?	55
Aromo lweny nining ikom two ma bino calo adwoki me two jonyo?.....	61

LOK MA KWAKO MITI ME COC MAN

PWONY ME GENGO, GWOKE KI NONGO YAT KWIDI TWO JONYO/AONA APIO

Lutic yotkom bitic ki Karatac man pi medo rwom mino tam ikom two jonyo ki pwonyo dano matye ka kwor ki kwidi two jonyo.

Pi lami kony.

- Medo rwom mino kony bot lutwo.
- Poyo wii lutic ikom nyig lok ma pire tek me anywaka ki lutwo makwako two jonyo.
- Poyo wii lutic ikom ber pa keto dano ma kinongo two ikomgi iyat cutcut
- Konyo lutwo me kati ati ikom two ma iremo gi.

Pi lunong kony onyo lutwo

- Medo ngec ikom kit me gwok ki nongo yat me two jonyo.
- Medo niyee ikom adwoki pim pa lunong kony.
- Medo miti pa dano ma opime dok onongo kwidi ikom gi me yee donyo iyat con.
- Dwoko ping cimo tok malupe ki two jonyo.

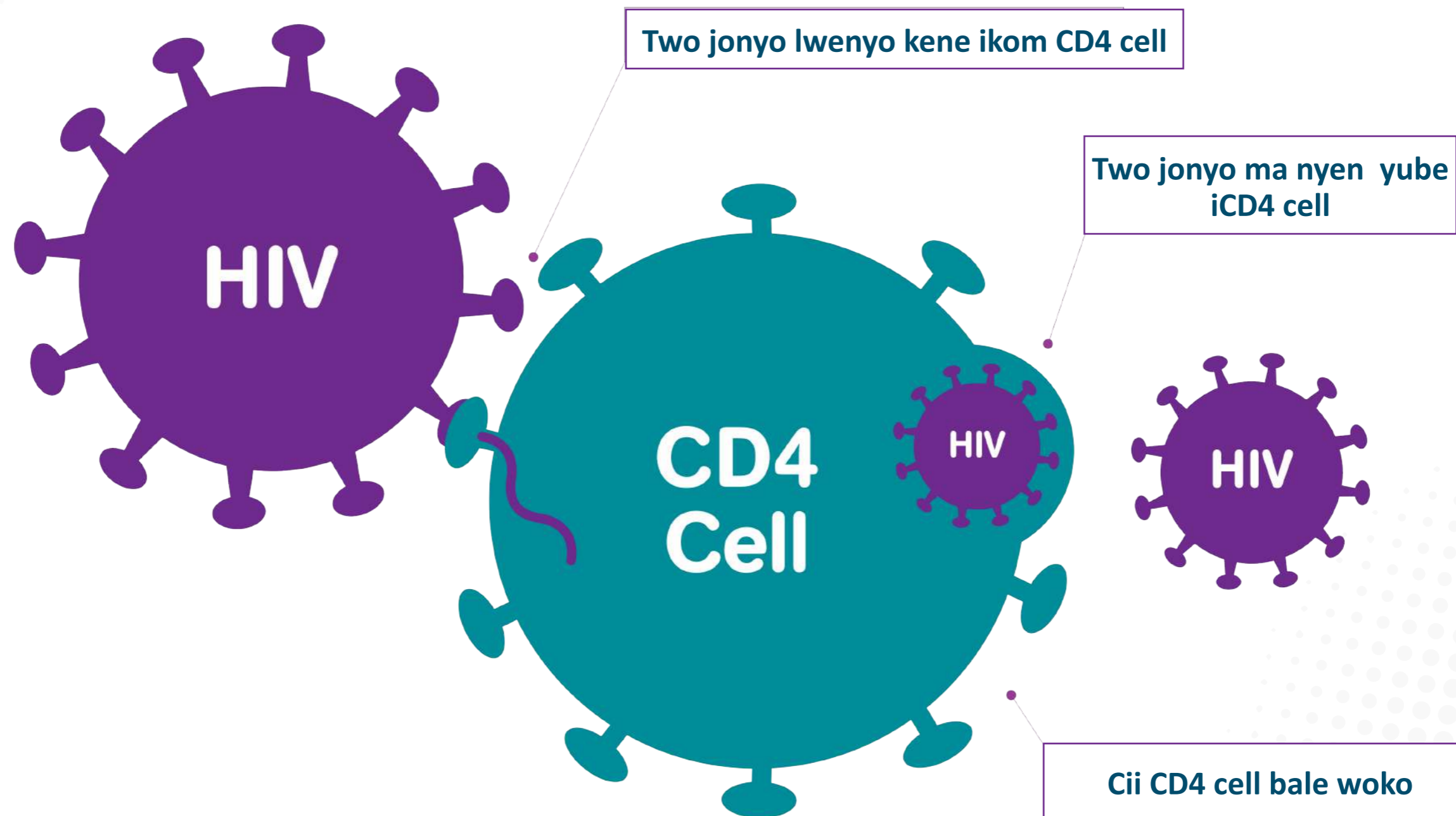
Kit me tic ki karatac man

- Yupe con ki poyo wii ikom nyig lok mapire tek ikaratac man.
- Jol lanong kony onyo latwo dok ibed ma ipime atir kwede.
- Nong miti pa latwo malupe ki ngec pa lunong kony ikaratac man.
- Ka itiyoy ki tung kama coc tye iye, neni lanong kony onyo latwo obedo ma neno cal maber.
- Cim cal kun iwoto ki lok
- Lok ma longo ma winye maber.
- Tii ki leb ma lanong kony niang
- Yee nywako tam ki penyo lapeny.

INIANG IKOM TWO JONYO?

PWONY ME GENGO, GWOKE KI NONGO YAT KWIDI TWO JONYO/AONA APIO

Two jonyo obedo kwidi ma lwenyo ikom CD4 cells ma iskari komi.



INIANG IKOM TWO JONYO?

PWONY ME GENGO, GWOKE KI NONGO YAT KWIDI TWO JONYO/AONA APIO

Two jonyo aye ngo?(HIV)

H-Human (dano)

I-Immunodeficiency (Askari ma goro)

V-Virus(kwidi)

Two jonyo lwenyo ikom askari kom dano dok weko dugu goro.ka pe ki nongo yat,Two jonyo motmot weko kom dugu goro ki lweny dok balo CD4 cell matye ikin askari kom wang ma dong komi pe romo lweny pire kene ki ikom two mapatpat.Man kelo two cilim.

Two cilim aye ngo?(AIDS)

A-Acquired (Dano nongo two)

I-Immune (Askari kom)

D-Deficiency (Teko ma pe)

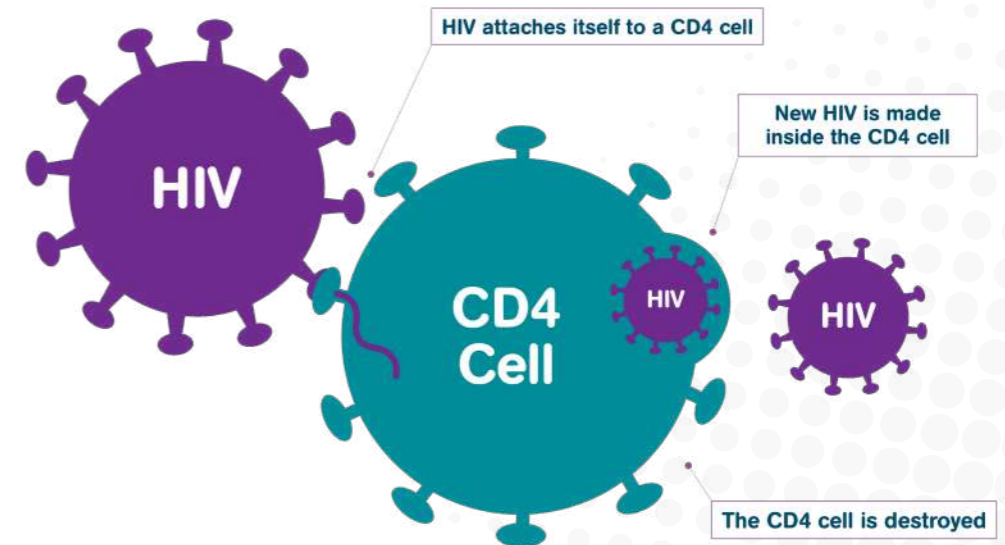
S-Syndrome (kwai two mapatpat).

- Dano nongo two cilim ka two jonyo obalo askari komgi marac adida ma dong komgi pe romo lweny ikom two .
- Dano matye ki two jonyo kiwajo ni tye ki two cilim ka inen two maro yelo ne calo aona Apio,pneumonia(ngiju),cado,two otel tok,two del kom ki lyeto.
- Dano romo kwor ki two jonyo labongo nongo cilim.Ento,ka two jonyo pe ki jino ki yat,loke dugu cilim.

CILIM ileb mukene:

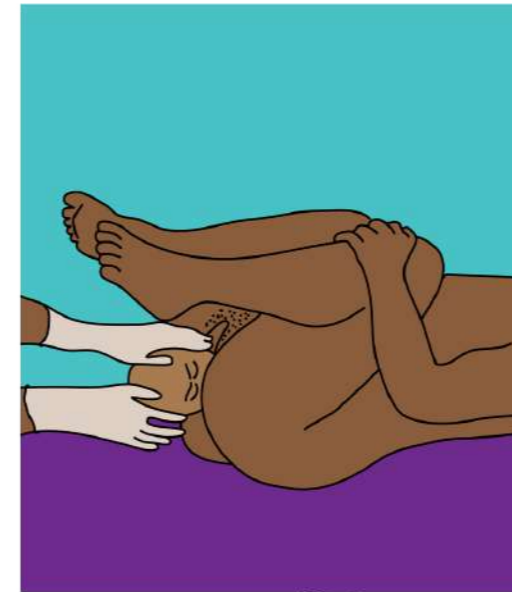
-
- Luganda – *Sirimu*
- Runyakore-
- Runyakitara- *Munywerero*

HIV is a virus that attacks the CD4 cells in your immune system



KOBO NINING

PWONY ME GENGO, GWOKE KI NONGO YAT KWIDI TWO JONYO/AONA APIO



Jami ma orupe ki remo ma two tye iye.

KOBO NINING

PWONY ME GENGO, GWOKE KI NONGO YAT KWIDI TWO JONYO/AONA APIO

Two jonyo kobo nining?

- Rwate ibutu labongo gwoke
 - Two jonyo (ki two mukene ma kobo ki ibutu calo nyac) romo kobo ki rwate ibutu:
 - Kudu remo ma two tye iye,lac nyodo pa coo,pig kom ma kati ki ikom mon pa dano matye ki two jonyo.
 - Two jonyo romo kobo irwate ibutu ki kom mon,dog ki dud.
 - Kadi itye iyat,latwo matye ka rwate nono ibutu romo poko onyo nongo kwai kwidi two jonyo mukene ma romo medo two ni mede ameda.
- Ki bot min latin matye ki two poko bot latin ikare me yacu,nywal ki dot.
- Bino kacel ki remo ma two tye iye,onyo pig kom ngat matye ki two.

Jami mukene ma medo two jonyo

- Gero pa pacu
- Nyom con
- Butu ikin dano ma mwaka ikin gi kato apar
- Rwate ki dano madwong ibutu
- Tim tee kwaro calo gono cal ikom(Tatoo) ki lire ma pe opore.
- Cato kom
- Tic ki kongo onyo yat iyoo marac.



Ka latwo ni obedo bulu

Kale ma pe
irwate ibutu



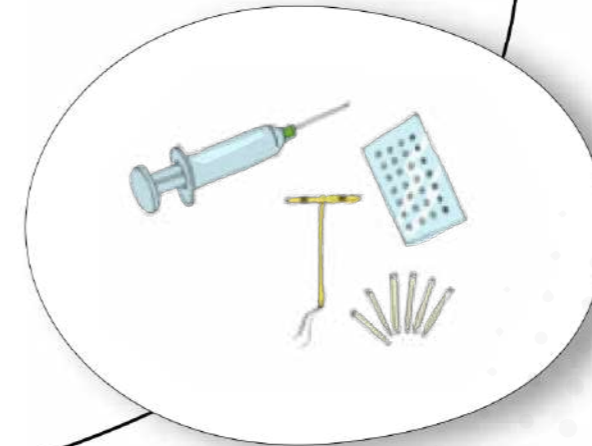
Tic ki roc bol pi gengo two ma kobo ki ibutu.
Roc bol bene gengo yacu.ka imito,iromo tic
ki yoo mukene me lago nywal kacel,Ento pe
mito ole kawang roc bol.



Bed ki gen ikom latoo ni
acel



Dwok wel dano ma irwate
kwede ibutu



KIT MA KOBO KWEDE

PWONY ME GENGO, GWOKE KI NONGO YAT KWIDI TWO JONYO/AONA APIO

Ka latwo ni tye bulu

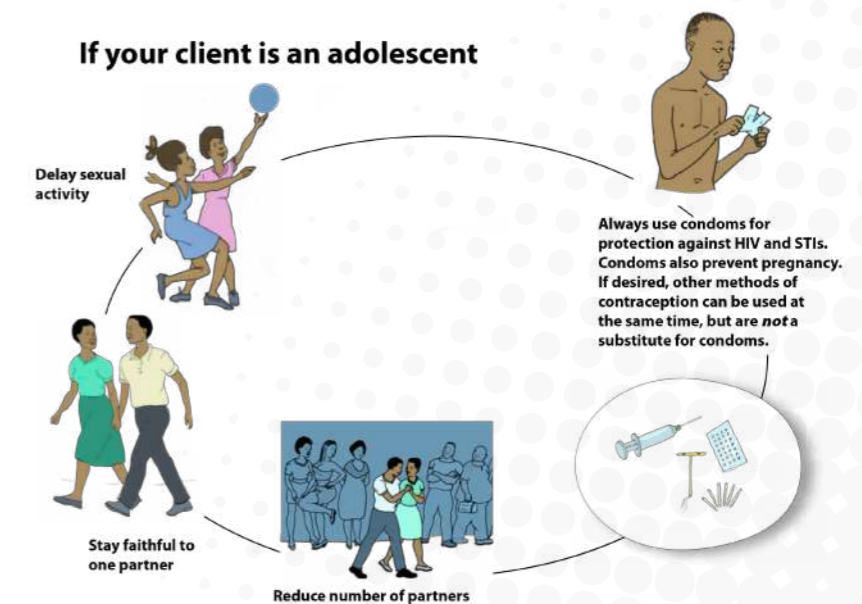
Mii tam me:Diroo

- Dii rwate ibutu. Rwate ibutu mito ocake ka dong ngat moni romo kanyo aduki ki peko ma aa ki ibutu calo two jonyo ki two nyac.,yacu ma pe iyupe iye.Neni iroto ka bulu ngeyo lok makwako two jonyo ki two mukene makobo ki ibutu cii imed pwony mukene ka mite.

Mii tam me:

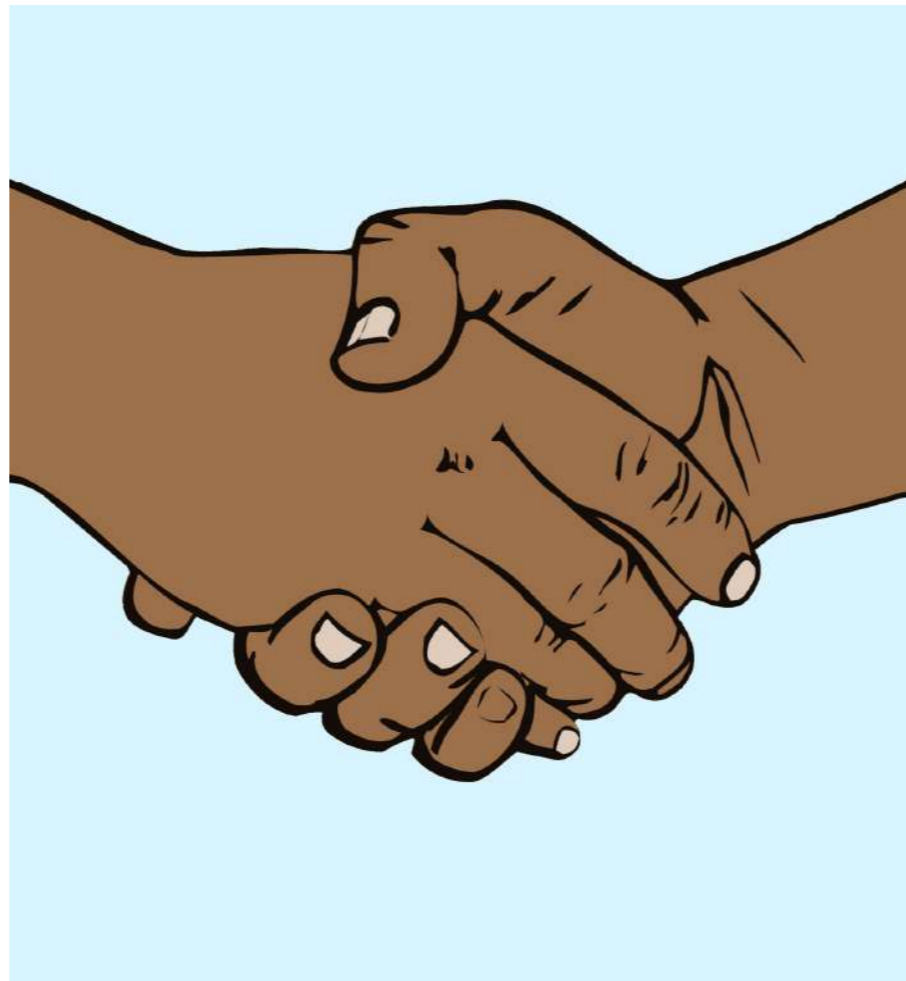
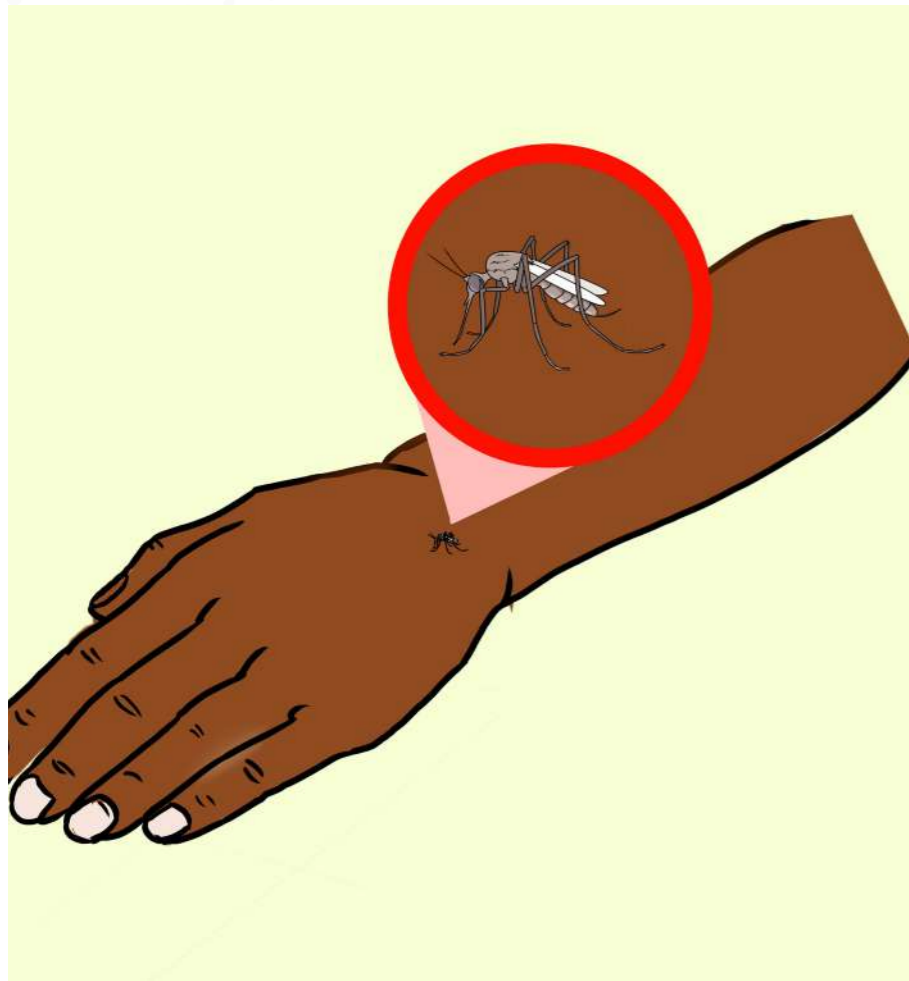
- Cobo miti kom ki yoo mukene calo (tuku ki komi,rweno komi,gudu komi,mot ikoo lawoti),gengo komi rwate ki pig nyodo pa latoo ni ma aa ki rwate ibutu ikom me mon,dog onyo dud.
- Tii ki roc bol: pi gwoke ikom two jonyo ki two mukene ma kobo ki ibutu,ki me gengo yacu ma pe iyupe iye.Iromo tic ki yoo mukene me gengo yacu kacel ka mite pi medo gwoke ki iyacu ma pe iyupe pire.Mito itir ki roc bol ka itye ka rwate ibutu ki dogi.Roc bol mito ki tir kwede kare ducu.
- Dwok wel dano ma irwate kwede ibutu.latoo acel ber loyo.
- Bed lagen bot latoo acel
- Nyut kit me tic ki roc bol.(Nyut karatac ma okato ka iwek gi opo rocbol ikom cal bol)
- pok rocbol
- Mii Pwony ikit me moko tam.Nywak lok iyoo ma opore me moko tam me tic ki roc bol ki Waco "Adegi" pi rwate ibutu ma idegi. Med diroo ki tekcwiny.Neni anyira oniang ni nongo two jonyo kare ne kere malupe ki mwaka ki coo ma iwinye kwedgi.
- Mii cik ikit ma kongo/yat romo dwoko kero ni me loyo komi cii adwoki ne bedo rwate ibutu ma pe igwoke.

Pi dano matye ka kwor ki kwidi two jonyo: wii opor me tic en ki yoo acel kadi dong itye iyat dok in ki latoo ni weng tye ki kwidi two jonyo.



TWO JONYO PE KOBO NINI?

PWONY ME GENGO, GWOKI KI NONGO YAT KWIDI TWO JONYO/AONA APIO

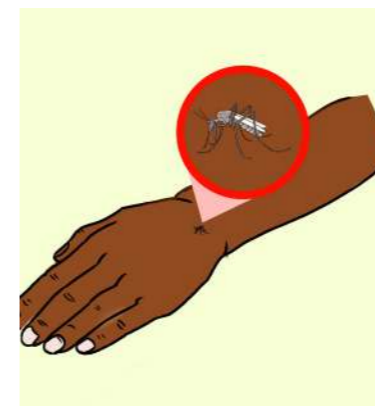


TWO JONYO PE KOBO NINI?

PWONY ME GENGO, GWOKE KI NONGO YAT KWIDI TWO JONYO/AONA APIO

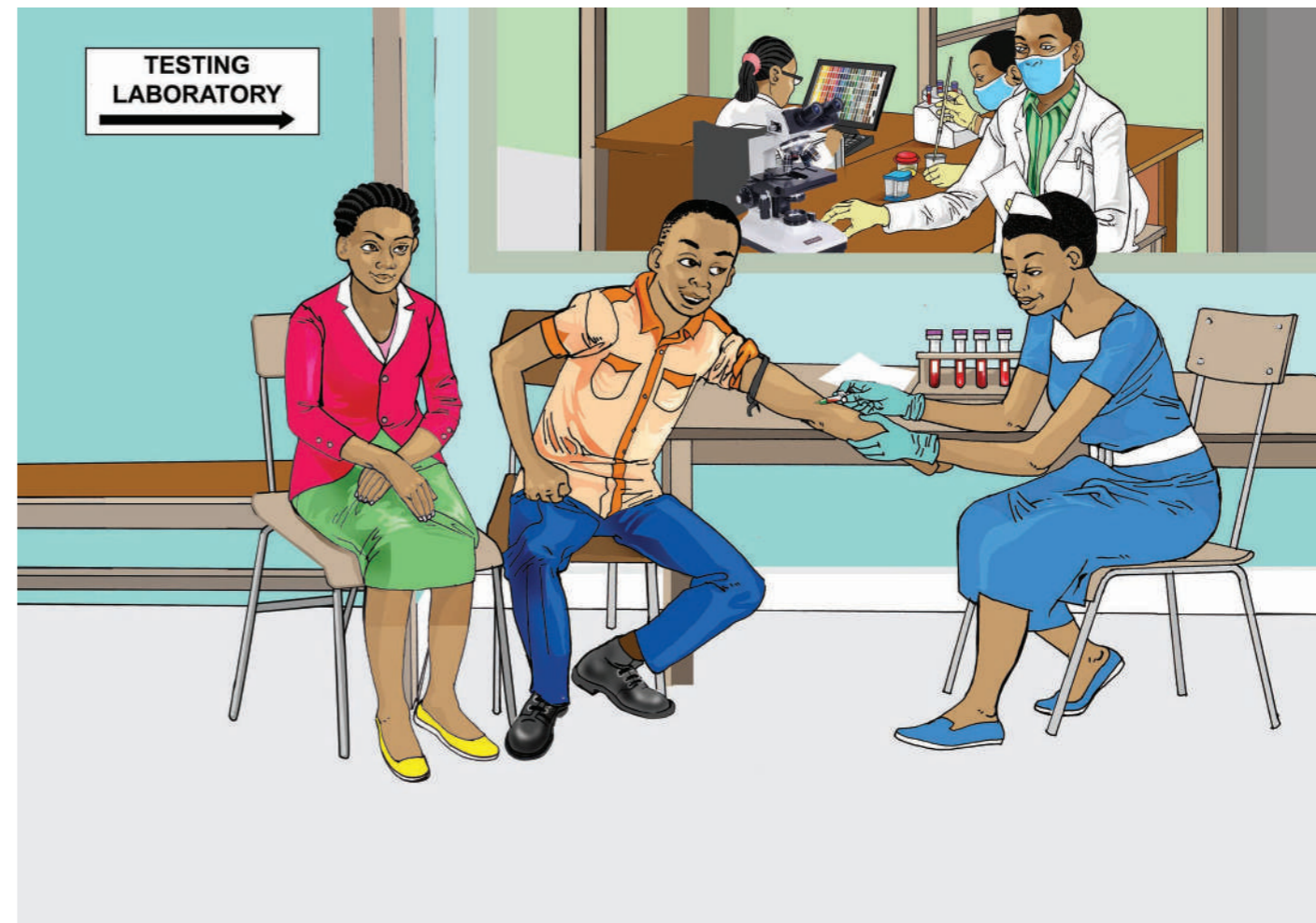
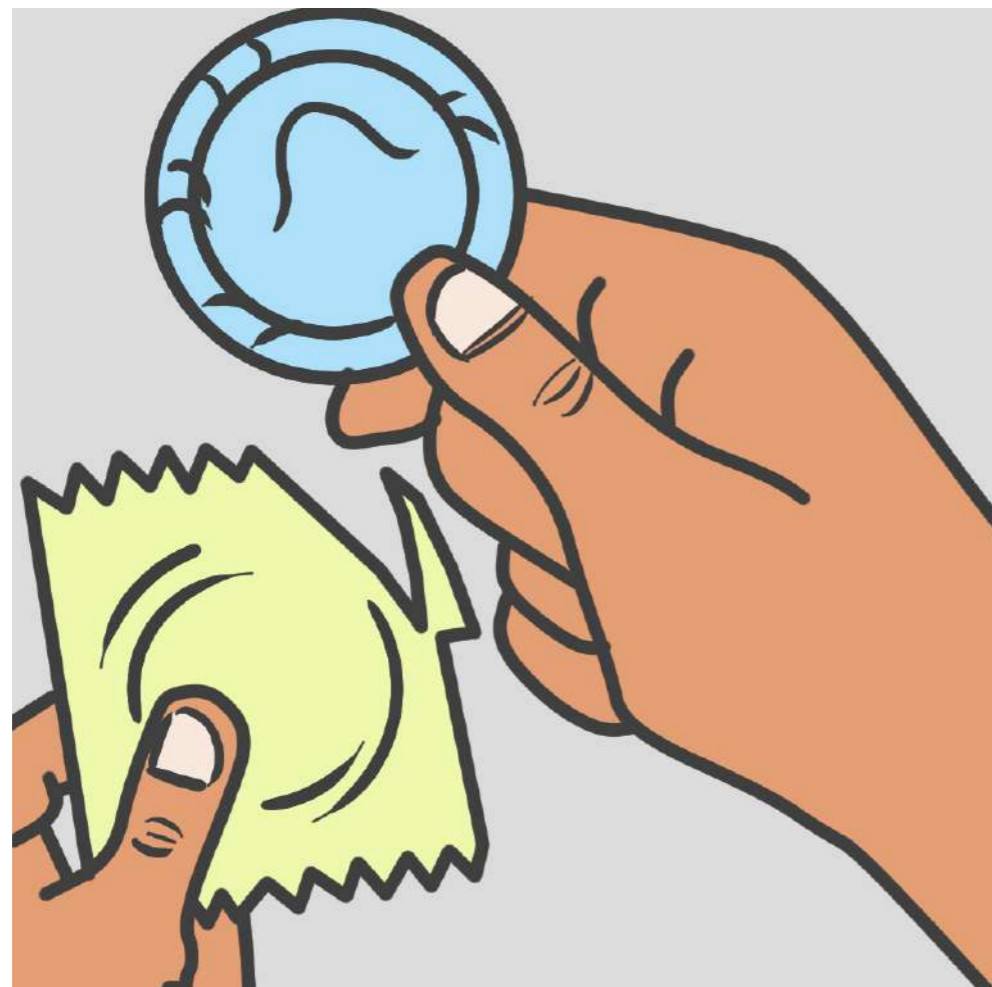
Two jonyo pe kobo ki;

1. Ober,okwodo onyo ki kac pa jami matuk
2. Laa,pik wang,lac onyo kwok ma pe orupe ki remo ma ngat ma tye ki kwidi two jonyo.
3. Moto cing,moto kor dano,ki gudu dano
4. Ribo coron
5. Ribo cwan onyo Atabo
6. Ribo kabutu ki ngat matye ki kwidi two jonyo.



DANO ROMO GWOKE NINING KI IKOM TWO JONYO?

PWONY ME GENGO, GWOKE KI NONGO YAT KWIDI TWO JONYO/AONA APIO



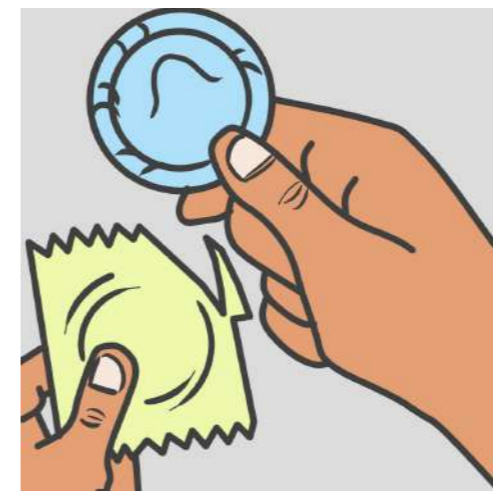
DANO ROMO GWOKE NINING KI IKOM TWO JONYO?

PWONY ME GENGO, GWOKE KI NONGO YAT KWIDI TWO JONYO/AONA APIO

Kiromo dwoko ping nining kare matye kere pi nongo kwidi two jonyo?

Petye yoo mo acel kiken maromo gengo kobo pa two jonyo ikin dano,pi man pire tek ni iti ki yoo weng matye.

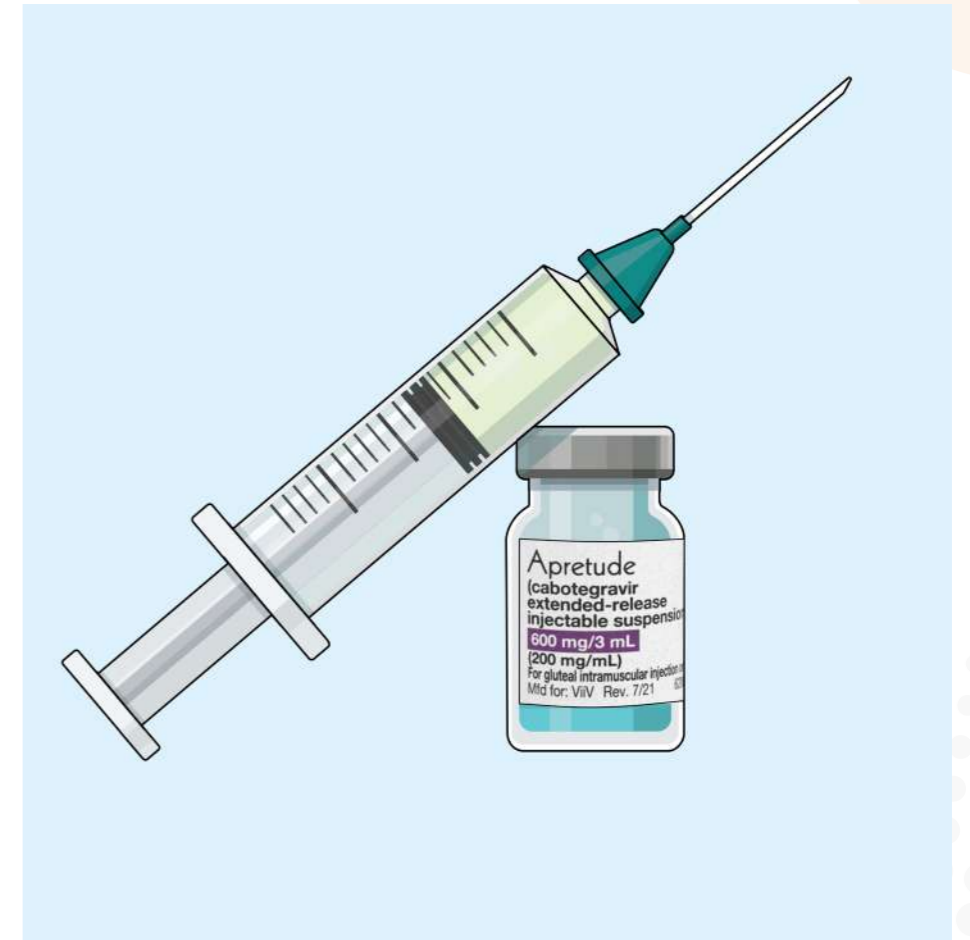
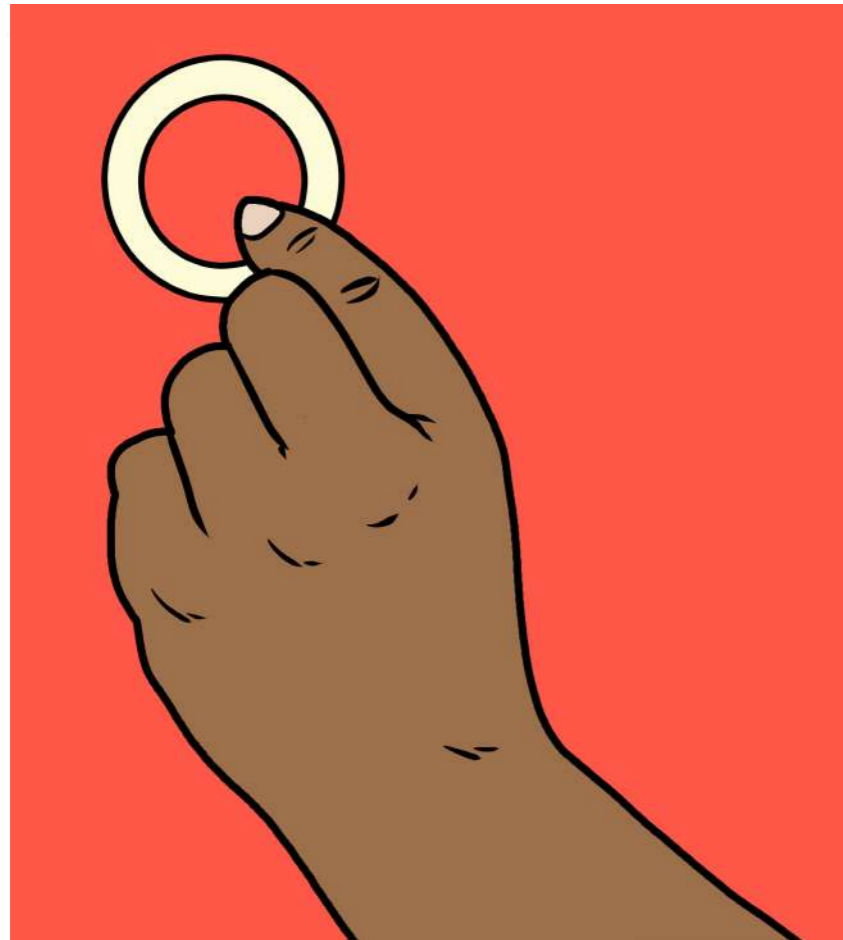
- Pime wek inge kit ma remo ni tye kwede
- Pe irwate ibutu
- Bedo lagen ikom latoo ni ma ingeyo kit ma remo ne tye kwede.
- Tic ki roc bol iyoo maber dok kare ducu ikin dano ma dong tye ka rwate ibutu.
- Liro coo(SMC)
- Munyu yat lageng two(PREP)-Yat ARV me amunya,libira,lawala ma kimiyo ki ngat ma kare ne tye kere pi nongo kwidi two jonyo,labole joo ma cate,joo matye iwinye ma ngat acel tye ki two,ngat mukene pee kwede.
- Yat lakin-yat ARV ma kimiyo ki ngat ma kare ne obedo kere me nongo kwidi two jonyo.
- Gengo kobo pa kwidi two jonyo ki ikom mege bot latino (PMTCT) Konyo mege matye ki kwidi two jonyo pe me kobo two bot lutino ma iic onyo lutino ma dot.
- Donyo iyat pi gengo two(donyo ki kanyo yat kacel ki dwoko kero pa kwidi two jonyo ping dwoko ping kare ma tye kere pi kobo ne)
- Nongo yat con pi two mukene ma kobo ki ibutu.



DANO ROMO GWOKÉ NINING KI IKOM KWIDI TWO JONYO?

PWONY ME GENGO, GWOKÉ KI NONGO YAT KWIDI TWO JONYO/AONA APIO

Tic ki PrEP ka kare ni tye kere me nongo kwidi two jonyo



DANO ROMO GWOKE NINING KI IKOM KWIDI TWO JONYO?

PWONY ME GENGO, GWOKE KI NONGO YAT KWIDI TWO JONYO/AONA APIO

Tic ki PrEP ka kare ni tye kere me nongo kwidi two jonyo

Munyu yat lageng two(PREP)-Yat ARV me amunya,libira,lawala ma kimiyo ki ngat ma kare ne tye kere pi nongo kwidi two jonyo,labole joo ma cate,joo matye iwinye ma ngat acel tye ki two,ngat mukene pee kwede.

Kwai PrEP ango ma iromo yero ki ikine?

- Lawala nyim-kiketo ikom me mon pi gengo kare ma tye kere me nongo kwidi two jonyo.ki loko dwe ki dwe.
- Yat ma ki munyu jwi ka fud Kare ni tye kere me nongo two.
- Libira ma kinongo inge dwe ariyo ariyo.

Who needs PrEP?

Anga ma mito PrEP?

Joo ma cate,dano matye ka winye ma ngat acel pe ki two,Anyira ki awobe bulu ma kare tye kere pi gin nongo kwidi two jonyo,dano ma tuce ki yat.

Iromo nongo PrEP kwene?

lot yat,dukan cato yat ikin gang ki dukan poko yat ikin gang.

Mito imuny PrEP pi kare marom mene?

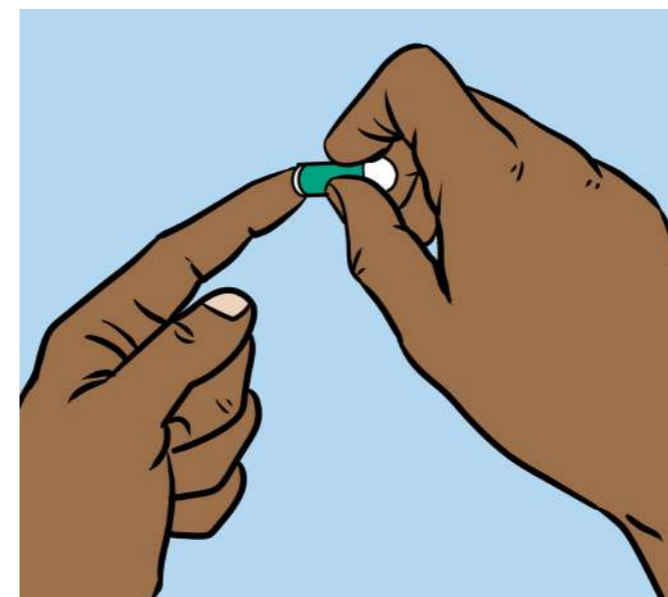
Mede ki munyu PrEP ka fud kare ni tye kere me nongo two.Wii opo me pime pi kwidi two jonyo inge dwe adek adek.

Kony me PrEP tye menono dok ka itye ki lok mo kiken ikom PrEP,peny latic yotkom.



NGENO KIT MA REMO NI TYE KWEDA

PWONY ME GENGO, GWOKE KI NONGO YAT KWIDI TWO JONYO/AONA APIO



NGENO KIT MA REMO NI TYE KWEDGE

PWONY ME GENGO, GWOKE KI NONGO YAT KWIDI TWO JONYO/AONA APIO

PIME PI KWIDI TWO JONYO

- Ngeno kit ma remo ni tye kwede obedo yoo acel ma pire tek me gwoko kwor ni.
- Pime pi kwidi two jonyo konyi weko ingeyo kit ma remo ni tye kwede wek inong kony ma imito pi gwoko kwor ni.
- Kony me pime pi kwidi two jonyo nonge I ot yat onyo kin gang kun ki tiyo ki remo onyo laa dog me pimo ne. Peny latic yotkom pi kony matye piri.

Ka inongo itye ki kwidi two jonyo

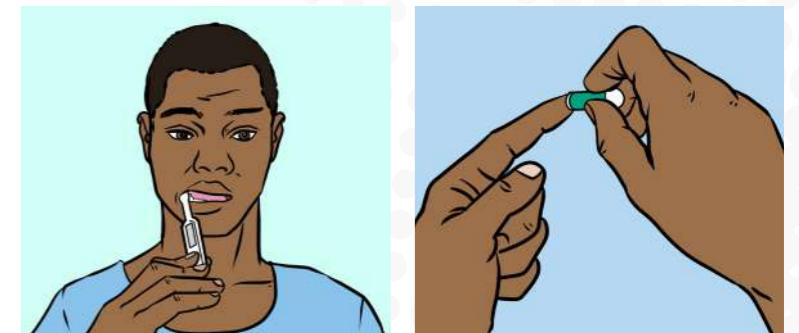
- Teloke ni remo ni tye ki kwidi two jonyo.
- Latic yotkom obicako mini kony cutcut dok obi pwonyi kit ma mito ibed ma komi yot.
- Obedo tici me munyu yat kit ma latic yotkom otiti kede, Man dwoko wel kwidi ma tye ikomi dok ka itimo meno;
- Ibi kwor ma komi yot dok itimo tici weng
- Ibi dwoko ping kare ma tye kere me miyo two ki latoo ni onyo dano ma itye ka rwate kwed gi ibutu.

Ka inongo ipee ki two

- Teloke ni remo ni pe ki kwidi two jonyo
- Wek junge ento cung nirit ka itim gin moo kiken ma itwero pi bedo labongo kwidi two jonyo calo;
- Tit kit ma remo ni tye kwede bot latoo ni ka imini gii tam me cito ka pim bene.
- Bed ma pe irwate ibutu ka itwero
- Tii ki roc bol kare ducu ma irwate ibutu ki ngat ma pe ingeyo kit ma remo gi tye kwede.

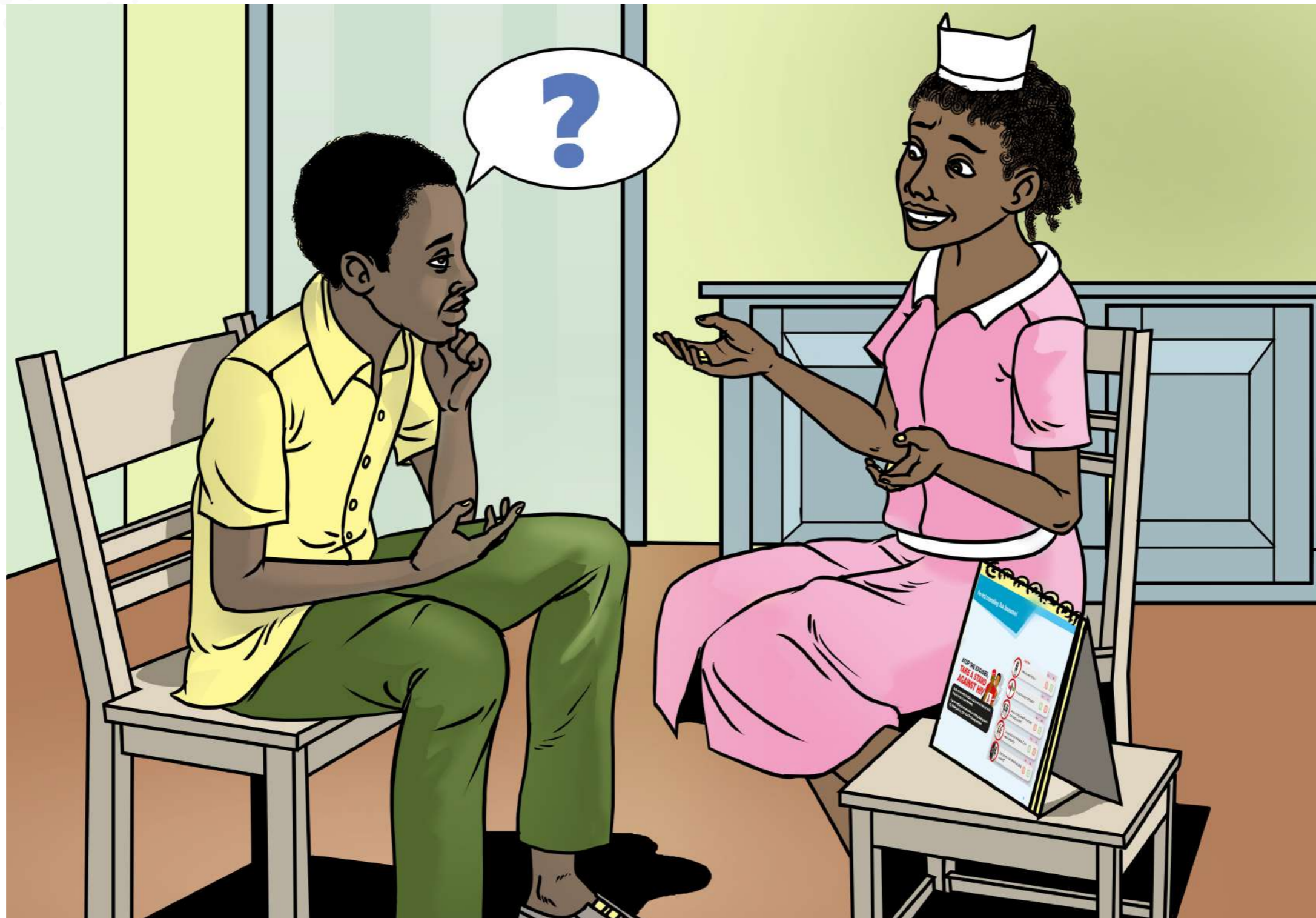
- Bed lagen bot latoo ni onyo dwok wel dano ma irwate kwedgi ibutu.

Wii opo: igiko ngeyo kit ma remo ni tye kwede tek irwate ibutu ma pe igeno. Yoo me rwate moo kiken labongo gwoke pi kwidi two jonyo romo keli kwidi two jonyo.



INGIYO NINING KI ADWOKI PIME MA KWIDI TWO JONYO TYE

PWONY ME GENGO, GWOKE KI NONGO YAT KWIDI TWO JONYO/AONA APIO



INGIYO NINING KI ADWOKI PIME MA KWIDI TWO JONYO TYE

PWONY ME GENGO, GWOKE KI NONGO YAT KWIDI TWO JONYO/AONA APIO

Ka inongo ni itye ki kwidi two jonyo, jami magi romo bino iwii.

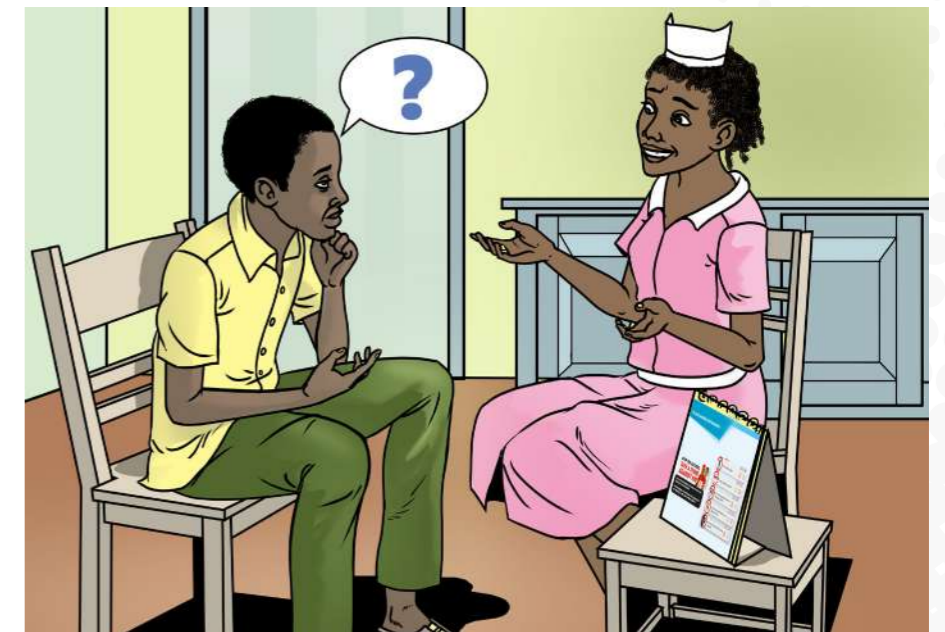
- Dong abitimo gin ango?
- Latoo na ki lugang wa obitamo ngo ikoma ka gi oniang adwoki pim na?
- Tika abimede ki tic?
- Dong mono abito'o kuu?

Man jami ma time me bedo ki lworu ikom Adwoki pime ni. Ento, iromo nongo kony kit me dino cwinyi. peko onyo lworu ma imaro bedo kwede inge iniang ni itye ki kwidi two jonyo aye:

- Lworu ka dano oniang ni itye ki kwidi two jonyo
- Lworu tito lok atir
- Lworu rwenyo tici
- Lworu gero
- Lworu too
- Kit me mede ki gwoko jo gangi
- Kit me lok ki luganga ikom remo na kit ma tye kwede.

Man aye jami ma iromo timo ne cutcut.

- Lok ki latic yotkom ikom lworu ni wek inong tam.
- Peny pi donyo iyat ki gwok
- Lok ki latic yotkom me pime pi aona Apio
- Nongo tam obikonyi me yee kit ma itye kwede dok obikonyi me kwor maber ki kwidi two jonyo.



GENGO KOBO PA KWIDI TWO JONYO IT LATIN KI BOT MIN LATIN

PWONY ME GENGO, GWOKE KI NONGO YAT KWIDI TWO JONYO/AONA APIO

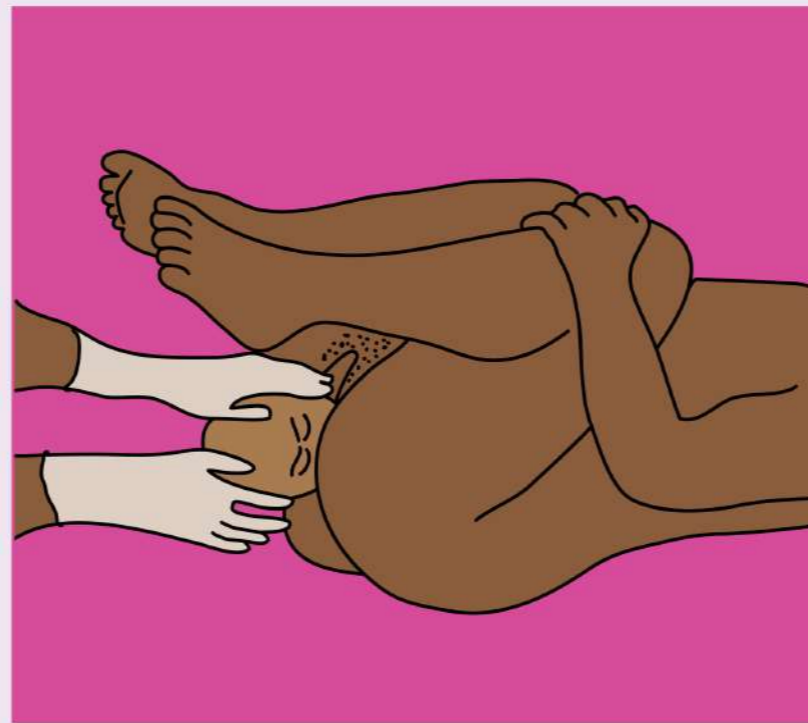
Jami ma weko kare bedo kere me kobo kwidi two jonyo bot latin ki bot mine

Ikare me yacu



- Two iot nyodo
- Kwidi two jonyo ma dwong iremo
- Moc cam ma pe ikom

Kare me arem ki nywal



- Arem ma rii
- Onyo ki yec pa kom me mon ki dog oot nyodo.
- Ruce ma nongo latini kato ki idogola oot nyodo.

Ikare me doto latin



- Rupu dot ki mino cak mukene ki latin(iacaki dwe 6)
- Dog latin ma o'onyo
- Dog cak ma otye onyo okak.

KIT ME GENGO KOBO PA KWIDI TWO JONYO IT LATIN KI BOT MINE

PWONY ME GENGO, GWOKE KI NONGO YAT KWIDI TWO JONYO/AONA APIO

EMTCT aye gin ango?

- Gengo kobo pa two it latin ki bot mine
- Man kwako timo jami ma gengo mego matye ka kwor ki kwidi two jonyo me poko ne ki latin tutwale wot ka pime.
- Pol mege ma timo jami magi nywalo lutino ma pe ki kwidi two jonyo.
- Konyo bene min ki won latin me kwor ma komgi yot pi kare malac.

Anga ma mito onong?

- Mon ma oyac
- Mon matye ka dot
- Lutino ma kare tye kere pi gin me nongo kwidi two jonyo.

Katala pa coo obedo ngo malupe ki teno kor EMTCT(Gengo kobo pa two)?

- Pime pi kwidi two jonyo kacel ki latoo ni.
- Neni irwate ibutu iyoo ma opore ki latoo ni.

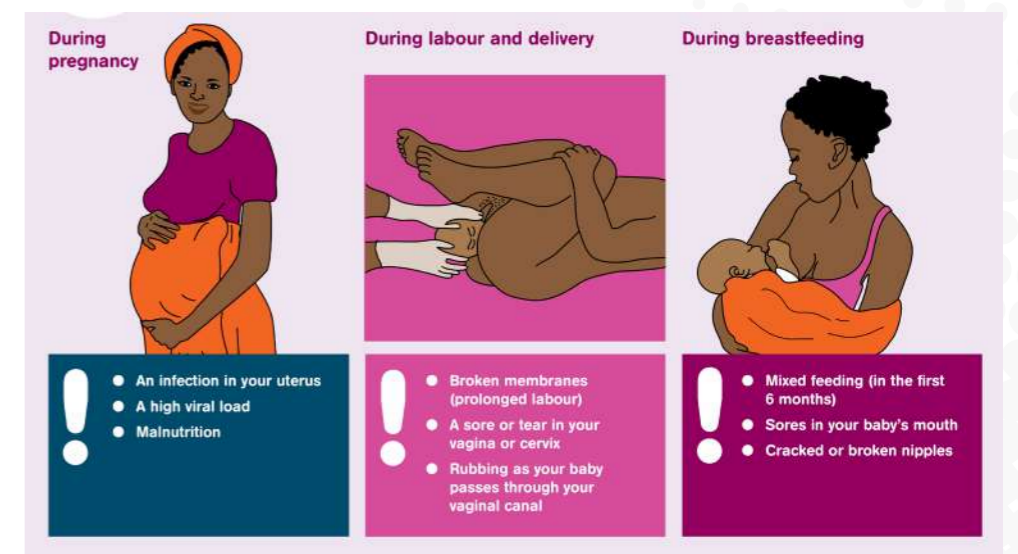
Kony ango mukene ma bino ki EMTCT?

- Pime ikare me yacu(tyen maromo 8)
- Pime pi kwidi two jonyo ikare me pime iyacu,nywal ki doto lutino) pi mege ma pe ki kwidi two jonyo.
- Pimo rwom kwidi ma iremo inge dwe adek adek pi mege ma tye ka kwor ki kwidi two jonyo.
- PrEP (yat lageng kwidi two jonyo)

- Gengo kwidi two jonyo
- Pimo PCR ki dek (3) pi lutino ma megi gi tye ka kwor ki kwidi two jonyo.
- Dot ma opore ki moc cam ma orwate pi mege.
- Gengo gero ma pacu.

Jami ma weko kare bedo kere ki kobo two ikare me yacu ki doto lutino.

Gero ma pacu



GENGO KOBO PA KWIDI TWO JONYO IKOM LATIN KI BOT MINE

PWONY ME GENGO, GWOKE KI NONGO YAT KWIDI TWO JONYO/AONA APIO

Lanyut marac ikare me yacu

Ka ineno lanyut magi ikare me yacu onyo inge nywal cii iot yat cutcut.



Remo ma kati ki ikomi me mon



Iyeto



Mego ma kome ojing onyo jake.



Arem ping icc ma tek



Abar wic matek



Ngok matek



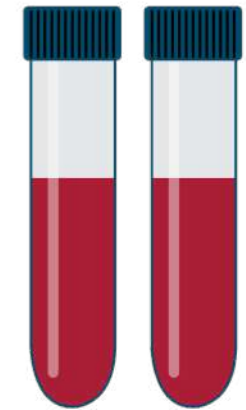
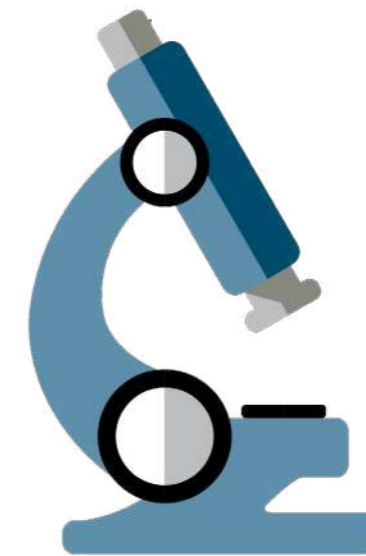
Wang ma okwot,cing ki tyen

GENGO KOBO PA KWIDI TWO JONYO IKOM LATIN KI BOT MINE

PWONY ME GENGO, GWOKE KI NONGO YAT KWIDI TWO JONYO/AONA APIO

Gwok ikare pime pi yacu ki doro kwidi two jonyo

- Roto kit ma latin tye ka dongo kede (calo winyo cwinye,winyo kit ma latin tuku kede.)
- Roto two mogo ma tego calo (two sukari,two pressure ki mukene)
- Pimo peko ma bino ki yacu(calor; remo ma peke,ki pressure)
- Yoo mogo me gengo peko iyotkom(calor akwera,ki mino yat malaria)
- Roto kwidi two jonyo ki mino yat(matye iye,roto remo,pimo nyac,roto kit ma obor ki oriju tiyo kede.
- Nongo yat pi peko matye iyot kom
- Ngec ki mino tam
- Lago nywal



GENGO KOBO PA KWIDI TWO JONYO IKOM LATIN KI BOT MINE

PWONY ME GENGO, GWOKE KI NONGO YAT KWIDI TWO JONYO/AONA APIO

Ngo ma mito inge ikare me yacu



GENGO KOBO PA KWIDI TWO JONYO IKOM LATIN KI BOT MINE

PWONY ME GENGO, GWOKE KI NONGO YAT KWIDI TWO JONYO/AONA APIO

Ngo ma mito inge ikare me yacu



The latic yotkom mito orot pressure ni ki kilo ni ikare pime weng.kilo ni mito omede ikare ma ic dongo kede.



Latic yotkomk mito ogweri pi two tetanus diphtheria(td). man gengo latini ki nongo two tetenus.



Muny yat remo pi acaki dwe adek me yacu ni.mede ki munyu yat remo ki (folic acid ma kirubu ki iron pi kare yacu weng,yat iron pe miyo peko moo ki latini. man weko remo pe tum ki ikomi dok weko adam ki cogo nge latin dongo maber.

Ikare pime ni,kibimini yat fansidar adek(3)kicel dwe acel,cake ma icc oromo dwe adek.man tye pi gengo in ki latini nongo two malaria.

Pime pi kwidi two jonyo ki nyac wun ki latoni pi gengo kobo two ki latini.



Pe itii tic ma tek ikare me yacu,maa yweyo.



Nong latic yotkom cutcut ka ikeng ruk ni pi niang ka iyac wek icak pime con.



Latic yotkom mito orot ii ikare pime weng.ot nyodo ni mede ki dongo madit kare ki kare ka iyac.

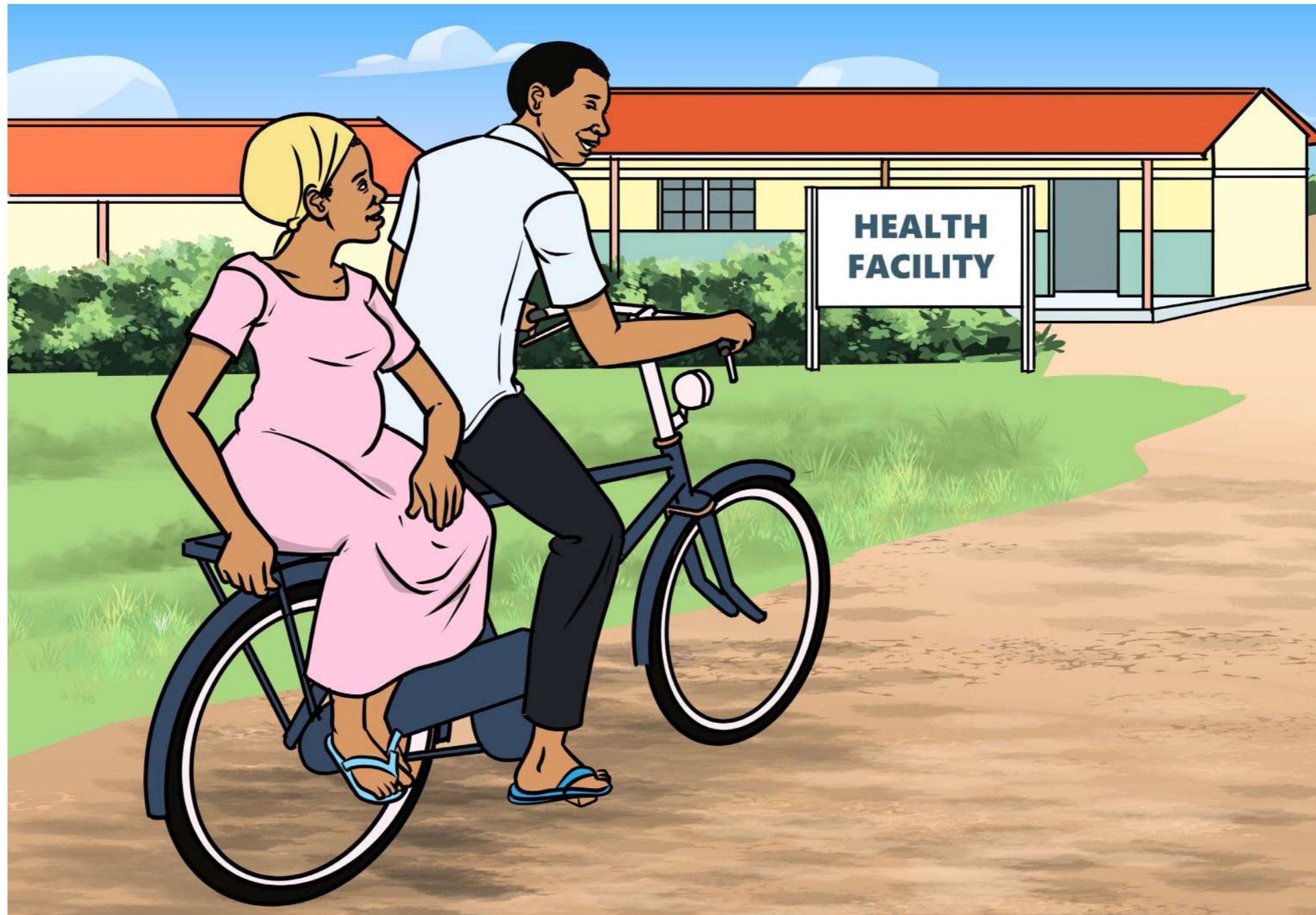
Iacoo

- Neni ipime pi kwidi two jonyo.
- Ka inongo ipe ki kwidi two jonyo ento dako ni tye kede,kibimini PrEP(Yat me gengo in nongo kwidi). ka kinongo itye ki two,ibicako munyu yat two jonyo wek ikwor ma komi yot.

GENGO KOBO PA KWIDI TWO JONYO IT LATIN KI BOT MINE

PWONY ME GENGO, GWOKI KI NONGO YAT KWIDI TWO JONYO/AONA APIO

Ngo ma mito iyup pi nywal?



GENGO KOBO PA KWIDI TWO JONYO IT LATIN KI BOT MINE

PWONY ME GENGO, GWOKE KI NONGO YAT KWIDI TWO JONYO/AONA APIO

Ngo ma mito iyup pi nywal?

- Nino nywali tye awene?...../...../..... ibedo ki anga?.....
- Imito nywal ki kwene?.....
- Anga ma obiteri ka nywal ka arem ocake?.....
- Ibityo ki gin wot ango me oo i oot yat?.....
- Anga ma obibedo kwedi i ootyat ka arem ocake?.....
- Yupe me tenyo ngat moo gang pi kare ma ibibedo iot yat.
- Bolo pel:[] kibibolo iot yat [] min latin dok kede gang
- Nga mukene matye lacungu dwa ni ma miro ki goo ire cim?.....

Imaro wot ki jami magi iot yat

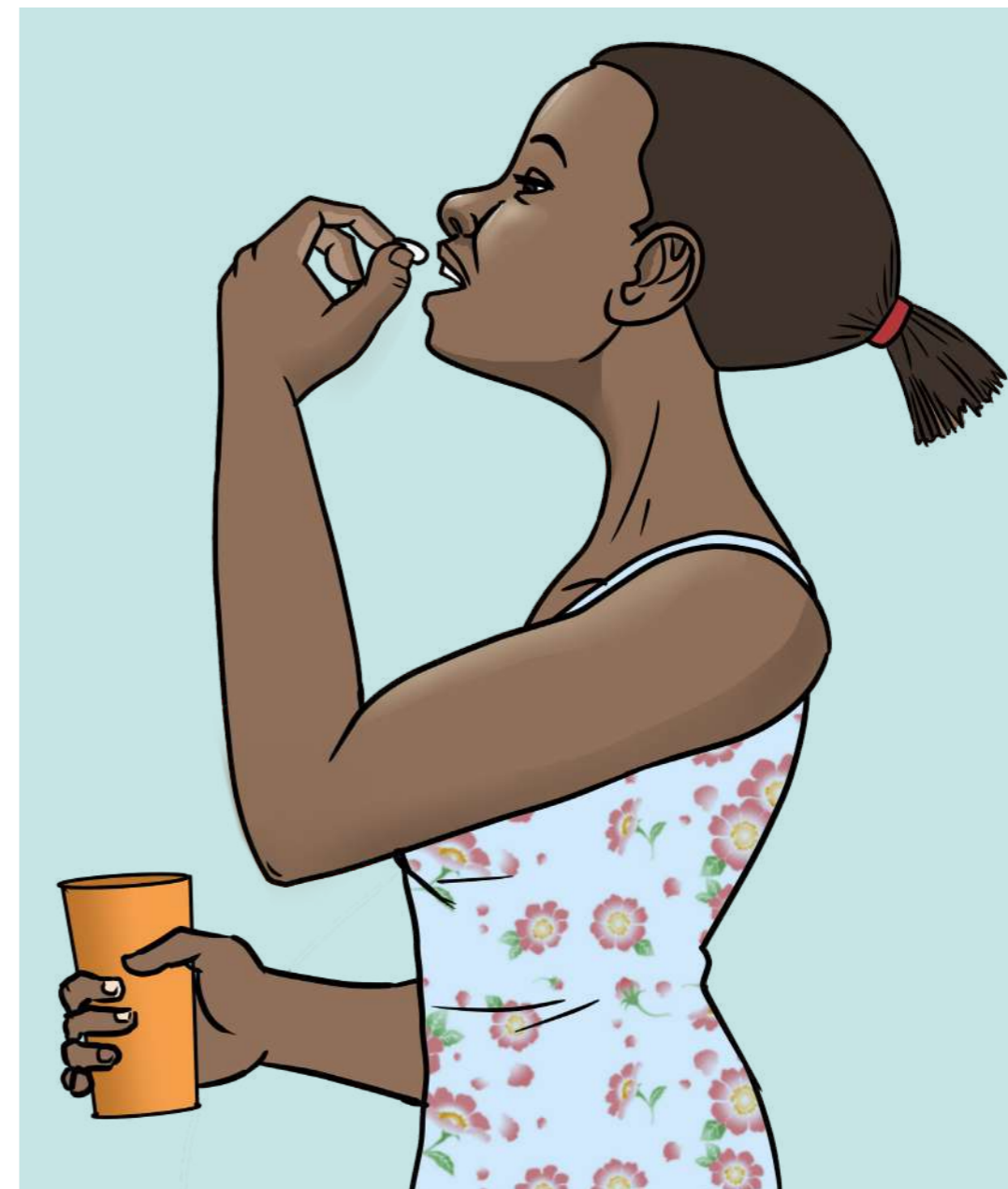
<input type="checkbox"/> Roc cing 4 	<input type="checkbox"/> Cavera plastic 2 	<input type="checkbox"/> tol adek (cm 20 ikom acel acel) 	<input type="checkbox"/> Iyedi 
<input type="checkbox"/> Bongo mwole 	<input type="checkbox"/> Bongi pa latin ki cuka 	<input type="checkbox"/> bap 	<input type="checkbox"/> Guaze ki cotton (jami boyo wang bur ma kiwilo ki iot cato yat) 
<input type="checkbox"/> cabun 	<input type="checkbox"/> Bongi malang piri 	<input type="checkbox"/> Sukari ki majan 	<input type="checkbox"/> Cente pi atura calo gin wot ki jami mukene. 



GENGO KOBO PA KWIDI TWO JONYO IT LATIN KI BOT MINE

PWONY ME GENGO, GWOKE KI NONGO YAT KWIDI TWO JONYO/AONA APIO

Ikare nywal ki inge nywal



GENGO KOBO PA KWIDI TWO JONYO IT LATIN KI BOT MINE

PWONY ME GENGO, GWOKE KI NONGO YAT KWIDI TWO JONYO/AONA APIO

Ikare nywal ki inge nywal

Ngo ma mito itim?

- Cit iot yat wek inywal icing latic yotkom ma tye ki ngec. Man obikonyi me nywalo latin ma kome yot maber pien latic yotkom opwonye me tic i kom peko ma bino ikare me nywal.
- Ka itye ki kwidi two jonyo, mede ki septrin kit ma kititi kwede wang ma latin oromo mwaka acel ki nucu onyo latin ogiko dot.

Katala pa coo

- Kony latoni me nywal iot yat.
- Tee latoni in kikomi iot yat
- Mii gwok dok ityel kor dako ni ki latin ma tye i'icc.
- Mii cam ma opore dok ikwor kwor maber ma weko min latin ki latin pe nongo two.
- Neni inino ite tandarwa ober, man kimiyo menono iot yat pa gamente.

Ngo ma mito itim

Mego

- Mii latini cak kor kiken pi dwer abicel (6)
- Mede ki munyu yat lagin kit ma latic yotkom otiti kede.

latin

Inge nywal latini kibimine yat Neverapinen (NVP) yat ma pige ma kimiyo malupe ki gin acel ikin jami ma kicoyo ping:

- Ka inongo ni itye ki kwidi two jonyo ikin acaki dwe adek(3) me yacu cii icako yat lagin onyo ono dong itye iyat lagin con cii rwom kwidi ni odok ping, kimiyo ki latini yat Neverapine pi cabit abicel(6)
- Ka inongo ni itye ki kwidi two jonyo i agiki dwe adek me yacu, ikare ma irem onyo icako yat lagin idwe me agiki me yacu, kibimiyo ki latini yat Neverapine pi cabit apara riyo (12)
- Ka kwidi two jonyo dwong iremo ni, kibimiyo ki latini Neverapine pi cabit 12.
- Inge dwe acel ki nucu (cabit 6) latini bicako munyu septrin, septrin konyo me gengo two mogo ma yelo lutino.



GENGO KOBO PA KWIDI TWO JONYO IT LATIN KI BOT MINE

PWONY ME GENGO, GWOKE KI NONGO YAT KWIDI TWO JONYO/AONA APIO



GENGO KOBO PA KWIDI TWO JONYO IT LATIN KI BOT MINE

PWONY ME GENGO, GWOKE KI NONGO YAT KWIDI TWO JONYO/AONA APIO

Neni latini onongo agwera pi gwoko gii ki itwo ma neko lutino ilobo Uganda.

Agwera ki pimo kwidi two jonyo pi lutino	
Inge nywal cut	Latin mito onong agwera ki (NVP) Yat ma pige.
Cabit 6	Latin mito onong agwera doki,onong septrin ka ki pim pi kwidi two jonyo.
Dwe 2½	Latin mito onong agwera doki,onong septrin ki adwoki pim pi two jonyo me acel.
Dwe 3½	Latin mito onong agwera ki septrin doki
Dwe 6	Latin binongo vitamin A ki tam kit me medo cam mukene mapat ki cak kor.
Dwe 9	Kibimiyo agwera ki latin ka ki pimo pi kwidi two jonyo tyen me ariyo.
Dwe 12	Latin mito ogik doto cak kor ka onong bene yat kwidi.
Dwe 13½	(Dwe abicel inge giko dot) kibipimo latin pi kwidi two jonyo pi tyen me adek.
mwaka 1½	Kibipimo latini pi kwidi two jonyo pi moko ne ka latin pe onongo kwidi ikare me doto cak kor.

Bed ki ngec: ikare lim weng,mego binongo yat lagin ki tam ikit me doto onyo pito latin.

Ka adwoki pim onongo kwidi two jonyo ikom latin,ki miyo bote yat lagin cutcut dok mede ki agwera ikom two mukene kit ma mite.Rwom kwidi pa mine mito kipim inge dwe adek adek.

Macalo mego,peny latic yotkom ikit me gengo yacu cutcut.Man obikonyi me cang maber dok me gwoko latini maber bene.

Moc cam pi mego ki latin:

- Cam maber ikare me yacu ki inge nywal tutwale ka itye ka dot pire tek me gwoko min latin ki latin ma komgi yot.
- Cak doto latin inge dakika 30 inge nywal.
- Mii ki latin cak kor kiken ki yat pi acaki dwe abicel labongo medo gin moo kiken.
- Rupo cak kor ki cam mukene medo kare ma tye kere pi min latin poko two ki latine malo.
- Inge dwe 6,latic yotkom obimini tam ikit kwai cam ma mito imi ki latin.

Nongo cam ma opore romo bedo ki;

- Mato jami mapige madwong
- Camo nyig yen ki camo pot dek
- Tic ki kado dek ma opore pi gengo peko iyacu (nywal abwoki,latin ma pe dongo, ki two goitre it min latin).
- Gwoko lengo me kom ki gin acama pi gengo two.
- Camo dek matye iye vitamin C me nongo iron ikomi.

Gin ma mito pe itim;

- Mato cai ki kawa ikin cawa acel ki dek pien man romo gengo komi nongo iron.
- Mato kongo,tar ki yat,med ki yat ma imunyu labongo latic yotkom mini.

Yat lagin kwidi two jonyo (yat Antiretroviral/ARVS)

PWONY ME GENGO, GWOKE KI NONGO YAT KWIDI TWO JONYO/AONA APIO



Yat lagin kwidi two jonyo (yat Antiretroviral/ARVS)

PWONY ME GENGO, GWOKE KI NONGO YAT KWIDI TWO JONYO/AONA APIO

Yat Antiretroviral (ARVS) aye ngo?

ARVs onyo yat lagin teloke ni yat kwidi two jonyo ma kimiyo ki dano matye ka kwor ki kwidi two jonyo me dwoko ping wel kwidi iremo gii.

Nyig Lok ma kwako yat lagin (ARVs)

- Yat lagin imunyu pi kwor ni weng.
- Lutig yotkom matye ki ngec aye coyo onyo miyo yat lagin.
- Tek igiko munyu yat lagin (ARVs) wel kwidi mede ikomi doki ka kelo goro ikomi.
- Yat lagin kwai ne dwong,pi meno muny yat ma latic yotkom kiken aye omiyo dok pe irib yat ki ngat mo.
- Yat lagin mukene kimunyu kicel nino acel,mukene kiriyo inino acel.
- Rubu yat lagin two jonyo ki yat mukene ma latic yotkom aye pe omini gin marac tutwal pien romo dwoko kero me tic pa yat ping onyo kelo peko iyot kom ma pe mite.
- Yat lagin kicako cut ka kimoko pi kwidi two jonyo ikom.
- Pire tek ni icak yat lagin inino enuni cut.Ento, kin mukene latic yotkom romo diro nino cako yat lagin pi peko yotkom mukene matye.

- Lutig yotkom romo loko yat mukene maber pi dwoko rwom kwidi ping ki lutwo.Dong lutwo mito pe olok yat ki wii gi.
- Iromo nongo yat lagin ikin kang onyo oot yat. peny latic yotkom pi kony mukene matye.

Tic pa yat lagin ikomi

- Yat lagin kwidi two jonyo kimiyo ikwai ne adek onyo makato,romo bedo iyat acel onyo makato icolour mapatpat bene.yat ma kirubu ni pi gi tek me lweny ikom kwidi ma ikom dano ki;
 - Gengo donyo pa kwidi mukene i askari kom (CD4 cells)
 - Gengo nyar pa kwidi
 - Gengo tegi pa kwidi manyen

Pi meno;

- Yat lagin (ARVs) dwoko wel kwidi ping(viral load) iremo ka medo wel askari me CD4 cells malo.
- Yat lagin (ARVs) dwoko ping kare ma tye kere me nongo two ma bino calo adwoki kwidi two jonyo/ two ma kuru donyo adonyo
- Yat lagin onyo ARVs dwoko ping kobo pa two.

NGEC:PENY LATIC YOTKOM KARE KI KARE PI YAT LAGIN MENE MA ITYE KA MUNYU NE.

Yat tye ikwai ne adek/malupe aluba.

- Kibicaki ki yat me acel onyo line me acel ma munyu ne yot dok nonge oyoto.
- Ka pe itye ka munyu yati ma opore ikit ma latic yotkom owaci kwede,kibiketi iline me ariyo me yat.
- Ka line me ariyo ongayi,line me agiki me yat aye line me adek(3) ma bedo yat madwong dok nongo ne tek.

NGEC:PIRE TEK NI IMUNY YATI KIT MA LATIC YOTKOM OTITI KWEDE.



AYUPE NINING PI NONGO YAT KI KONY ANGO MA AMITO?

PWONY ME GENGO, GWOKE KI NONGO YAT KWIDI TWO JONYO/AONA APIO



AYUPE NINING PI NONGO YAT KI KONY ANGO MA AMITO?

PWONY ME GENGO, GWOKE KI NONGO YAT KWIDI TWO JONYO/AONA APIO

Dino cwinyi teloke ni munyu yati;

- IYOO MA OPORE
- YAT MA OPORE
- IWEL MA OPORE
- ICAWA MA OPORE
- NGAT MA OPORE

Kit ma latic yotkom matye ki ngec onyutu kede.

Pire tek ni iting yati ma odong kare weng ma itye ka dok iot yat.

Pire tek ni inong ngat moo ma igeno okonyi ki poyo wii me munyu yati maber.

Wii opor pi gwoko nino dok iot yat kit ma latic yotkom ociko kede.

Aromo diyo cwinya nining?

- Nongo calendar me konyi ki nino dwe.
- Nongo kony ki bot ngat ma konyi ki munyu yat
- Tic ki cawa makok(alarm)
- Coc ikom Koch yati pi gengo rubu ne ki yat pa ngat mukene iot kenyu.

Ingiyo nining ki adwoki yat lagi onyo ARVs

Pol yat lagi ikin kare ni pe ki adwoki gi matek.

Adwoki yat lagi pi kare macek aye;

- Lem cwiny
- Lek maraju
- Del kom ma o'onyo
- Awira wic
- cado

Ngec: man romo bedo pi kare manok,ento ka omede,nong tam pa latic yotkom.

Adwoki yat lagi pi kare malac

- Sugar ma mede malo(lac teretere,mato pii teretere ki cam teretere)
- Arem icogo
- Cweyo ma okato kare.

Ngec: pi yat ma kimunyu kicel ka ikale munyu ne,neni imunyu yati ikin cawa 12 ki icawa ma jwi imunyu iye.pi yat ma kimunyu kiriyo,neni imunyu ikin cawa 6.

Inen okato cawa magi,dii munyu yati wa orwo.




AROMO KONYO LATINA NINING KI NONGO YAT?









PWONY ME GENGO, GWOKE KI NONGO YAT KWIDI TWO JONYO/AONA APIO

Man aye kit ma mito imii kede yat pDTG bot latini ki abacavir med ki lamivudine (ABC/3TC) 120/60 mg ma ki munyu amunya.ka latini pe ka munyu ABC/3TC, alokaloka romo bedo tye.mito ilub lok pa latic yot-kom.

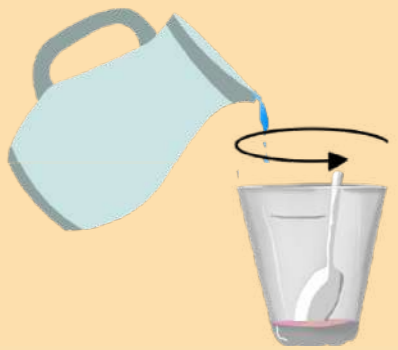
1



Med wel pDTG ma opore ki yat ABC/3TC i kikobo maleng malupe ki wel kilo onyo pek pa latini.(nen meca maping ikit me miyo yat).

Pek pa latin	Wel yat pDTG jwi	Wel yat ABC/3TC 120/60 mg jwi
3 to < 6 kg	0.5 	1 
6 to < 10 kg	1.5 	1.5 
10 to < 14 kg	2 	2 
14 to < 20 kg	2.5 	2.5 

3



Ka yat moo kiken odong i kikobo,med pii moo manok cii imii ki latin.nywor wang ma yat moo dong pe i kikobo.

2



Med Malaga chai 2-4 (ml 10-20) me pii maleng i kikobo. Rup wang ma yat olo.

Rub wang ma yat olo weng.

Mii latin omat yat.Neni omato yat weng icawa meno onyo ikin dakika 30

AROMO KONYO LATINA NINING KI NONGO YAT?

PWONY ME GENGO, GWOKE KI NONGO YAT KWIDI TWO JONYO/AONA APIO

Yat lagin manyen ma ki medo rwome pi lutino matye ka kwor ki kwidi two jonyo dong tye.

Dolutegravir mg 10 yat amunya pa lutino (PDTG)

- Tiyo oyoto pi juyu wii kwidi
- Ber dok adwoki ne nong ka iporo ki lajin mukene.
- Ki munyu kicel nino acel dok loo ipii oyot.
- En yat acel ma ludito munyu,ngweje tye ngig yat strawberry.

Peny latic yotkom pa latini ikom yat ango matye.

Lapoo wic

- Wii opo miyo yat lagin ki latini cawa marom nino ducu.
- Tii ki gin amata onyo dek me rubu yat ka latini pe romo mato ne ipii.tii ki wel cam onyo gin amata marom kit ma jwi pi gengo balo yat ki meneni latini onongo yat kit ma mite.
- Nywo miyo ki latini pDTG ka gi ongok ikine dakika 30 inge mato yat.

Ngo ma aromo timo ne ki latin ma wel kwidi ne tye lamal?


- Neni latin omunyu yat lajin kwidi two jonyo jwii.
- Pwony dano ma gang weng ikit me miyo yat ki latin.
- Pe ipok latin man ki ikin lutino luwote.
- Lok ki latin ikom ber pa munyu yat jwii.
- Neni latin ocamo maber.
- Peny pi kony mukene matye iot yat ikit me konyo latini.

These are instructions on how to give your child pDTG alongside abacavir and lamivudine (ABC/3TC) 120/60 mg dispersible tablets. If your child is not taking ABC/3TC, there may be changes to these recommendations. Always follow the guidance of your healthcare provider.

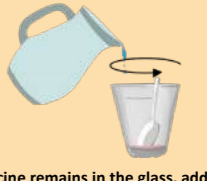
1 

Add the correct number of pDTG and ABC/3TC tablets to a clean, empty glass based on your child's weight. (See Dosing Table).

Weight	No. of pDTG Daily Tablets	No. of ABC/3TC 120/60 mg Daily Tablets
3 to < 6 kg	0.5 	1 
6 to < 10 kg	1.5 	1.5 
10 to < 14 kg	2 	2 
14 to < 20 kg	2.5 	2.5 

2 

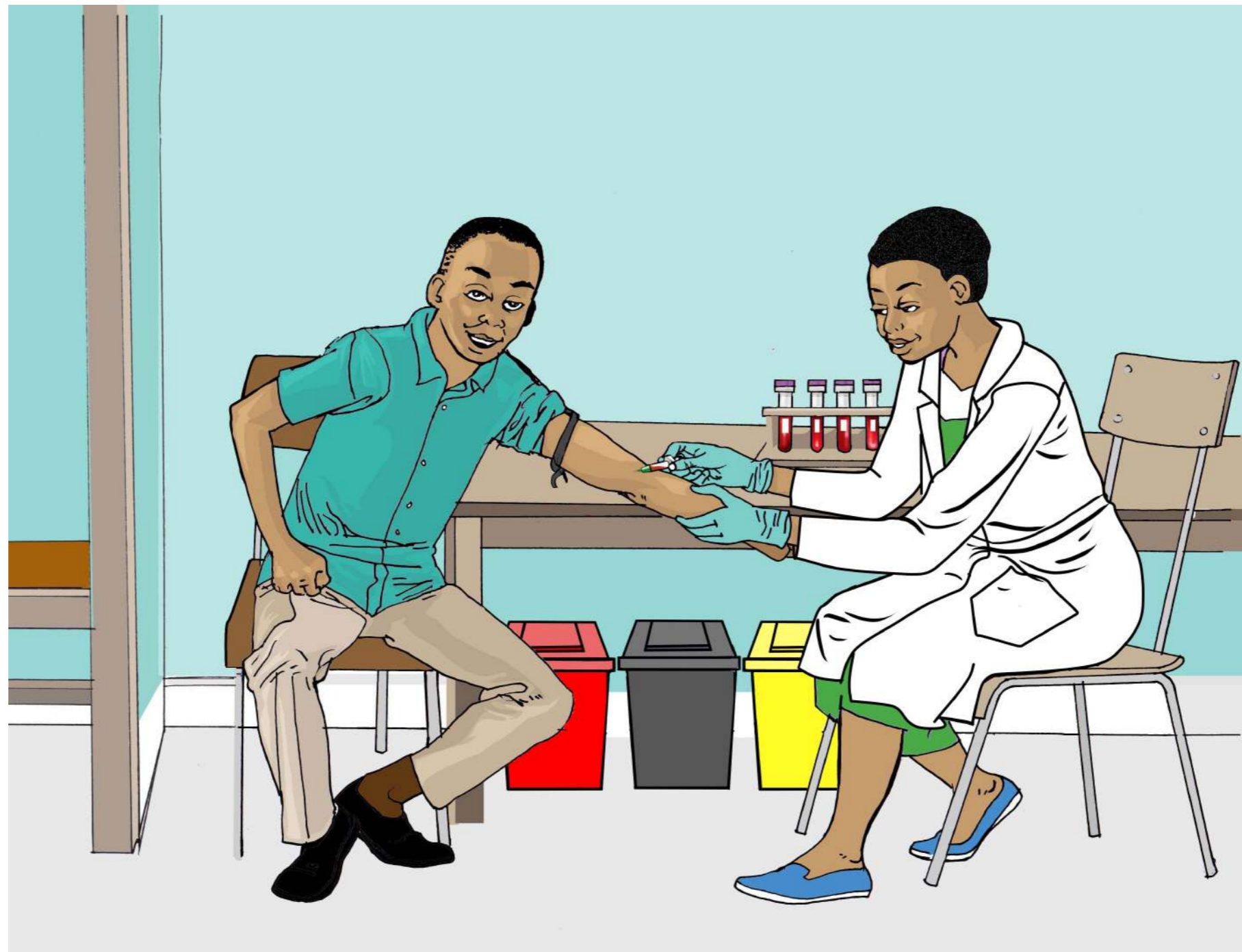
Add 2-4 teaspoons (10-20 mL) of clean water into the glass. Stir until the tablets fully dissolve. Give the medicine to your child to drink. Make sure they drink all the medicine right away or within 30 minutes.

3 

If any medicine remains in the glass, add a little more water to the glass and give to your child. Repeat until no medicine remains in the glass.

NENO KI GWOKO YOTKOM PA DANO MATYE KA KWOR KI KWIDI TWO JONYO

PWONY ME GENGO, GWOKI KI NONGO YAT KWIDI TWO JONYO/AONA APIO



NENO KI GWOKO YOTKOM PA DANO MATYE KA KWOR KI KWIDI TWO JONYO

PWONY ME GENGO, GWOKO KI NONGO YAT KWIDI TWO JONYO/AONA APIO

Pire tek ni igwok nino dok iot yat ma latic yotkom ociko maber pi roto jami magi;

CD4;-

1. Askari komi (CD4;-

- Ka kwidi two jonyo ononge ikomi
- Ka rwom onyo wel kwidi iremo ni tye lamal

2. pimo wel kwidi otum:

- Dwe 6 inge cako yat lagin onyo ARVs (PI DANO WENG)
- Inge dwe 12 pi ludito ma mwaka gi 20 odok kede malo
- Inge dwe abicel weng pi lutino ki bulu matino(mwaka 0-19)
- Inge dwe adek weng pi mege ma oyac ki matye ka dot.

3. ikit me moc cam(kilo,bor ki MUAC)

4. Nyutu two mukene ma kuru donyo macalo adwoki me kwidi two jonyo(0.ls)

5. Dinoo cwiny

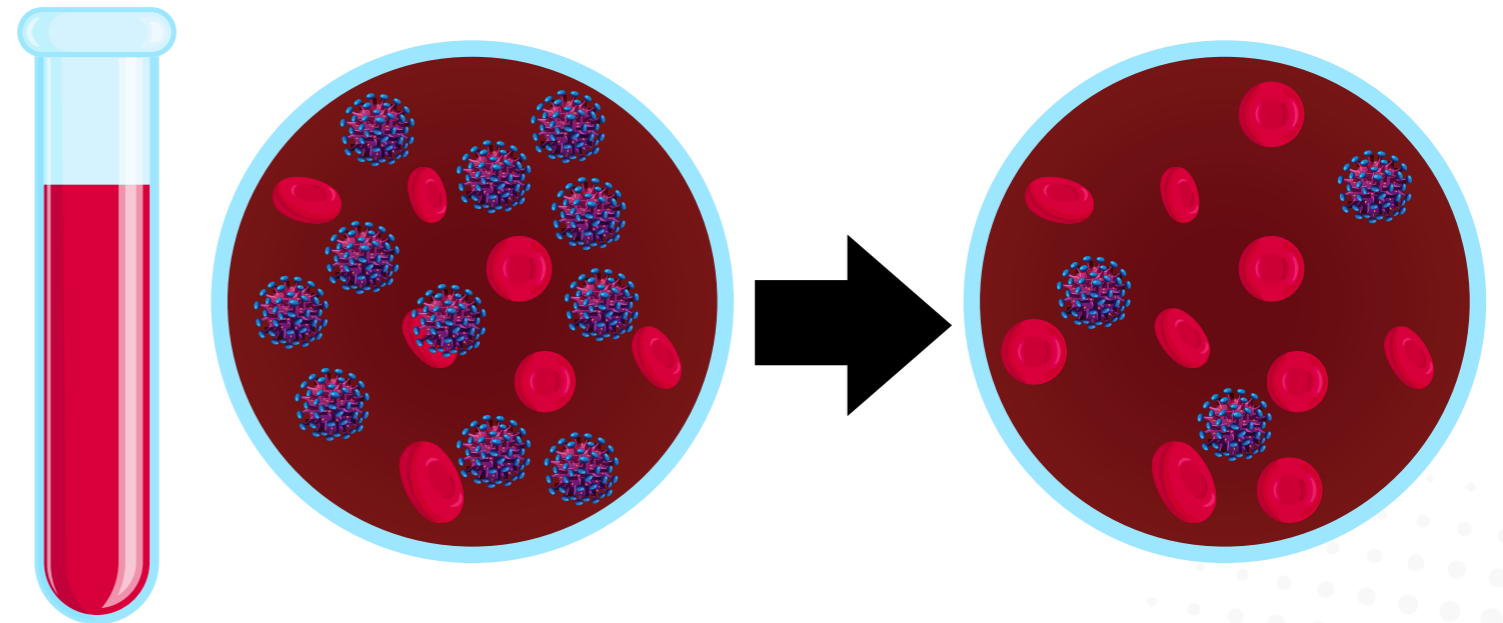
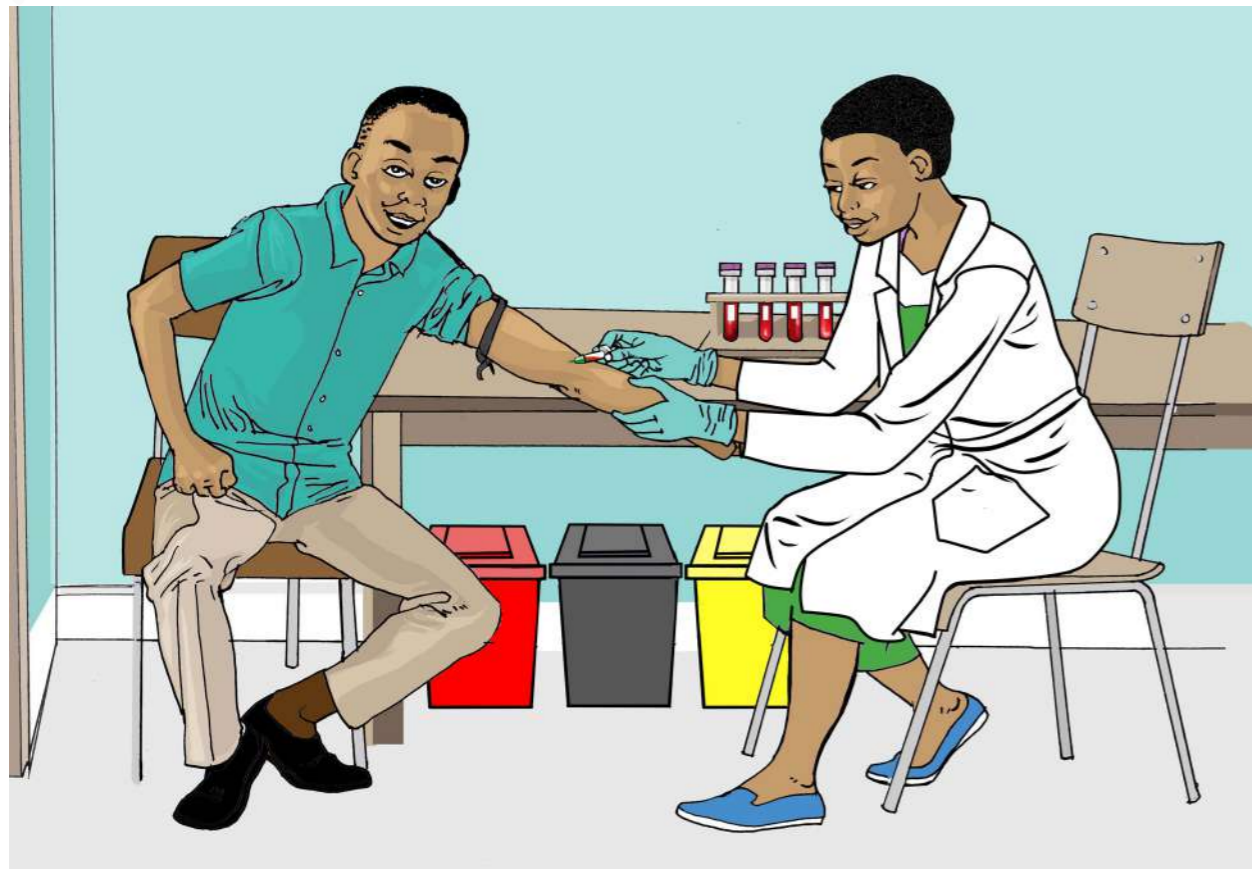
- Mito ilim latic yotkom kare ki kare pi roto kit ma itye kede kit ma kiciko ka ipeny pi pimo rwom kwidi ma iremo ni kadi kicel imwaka acel
- Pimo rwom onyo wel kwidi konyo in ki dacta ni me niang wel kwidi two jonyo matye iremo ni.
- Wel kwidi ma laping teloke ni yat lagin ni tye ka tic maber dok mito imede ki munyu ne.
- Wel kwidi ma lamal teloke ni yat lagin ni pe katic maber dok dacta ni mito okonyi me dwoko ne ping.
- Mito iwac ki latoo ni ki lugangwu kit ma remo ni tye kede.giromo konyi me jingo cwinyi ki konyi me mako yat ni king.

- Mii tam ki latoo ni matye ki ma ipoke kwedgi pi cito ka pime pi kwidi two jonyo.
- Neni itiyi ki rocbol pe gengo kobo pa two it latoo ni ki me gengo in nongo kwai kwidi two jonyo manyen.
- Bed lagen ikom latoo ni onyo dwok wel dano ma irwate kwedgi ibutu ping.
- Cit wek ki liri maber ka fud peya ilire.



ROTO YOTKOM PA NGAT MA TYE KA KWOR KI KWIDI TWO JONYO

PWONY ME GENGO, GWOKE KI NONGO YAT KWIDI TWO JONYO/AONA APIO



Wel onyo rwom kwidi ma laping

ROTO YOTKOM PA NGAT MA TYE KA KWOR KI KWIDI TWO JONYO

PWONY ME GENGO, GWOKE KI NONGO YAT KWIDI TWO JONYO/AONA APIO

Pimo rwom kwidi ma iremo.

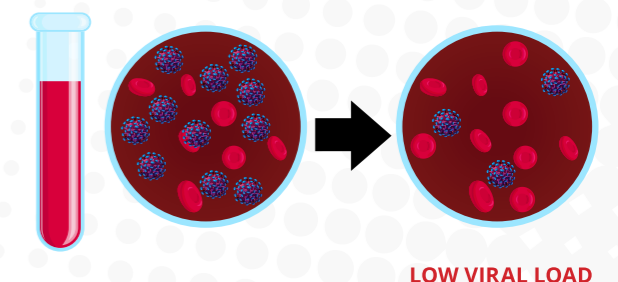
- Kipimo rwom kwidi two jonyo me niang wel kwidi matye iremo ki me moko caden ka yat lagin tye katic maber.

Kwidi madwong iremo teloke ni:

- Bedo ki kwidi maromo onyo kato 200 iremo ni
- Ki pe ka gino wii kwidi, dok kwidi tye ka wano komi.
- Itye ka geng munyu yat.
- Kwidi pe ka winyo yat ma teloke ni oloko kite oko dok yat lagin dong pe katic.

Kwidi manok iremo ni teloke ni:

- Pe kinongo kwidi onyo matye pe kato 200 iremo ni.
- Itye ka kanyo yat maber.
- Kwidi kidiyo wiye ping
- Itye ka munyu yat kit ma mite kede labongo keng.



ROTO KA YAT NA TYE KA TIC

PWONY ME GENGO, GWOKE KI NONGO YAT KWIDI TWO JONYO/AONA APIO



ROTO KA YAT NA TYE KA TIC

PWONY ME GENGO, GWOKE KI NONGO YAT KWIDI TWO JONYO/AONA APIO

Man aye jami ma iromo timo ne:

- Pe imat kongo ki yat ma pe opore
- Pe irwate ibutu ki dano madwong
- Cam cam ki moc cam ma opore
- Gwok lengo ni
- Tyel kor latoni me cito ka pime pi kwidi two jonyo
- Goo pulan kare ki kare ka igwok cente me dok iot yat.
- Lok ki latic yotkom ka twere me donyo igroup onyo kama iromo nongo iye kony mukene.
- Nong numba cim pa latic yotkom mo ma igeno pi nongo kony kare ki kare.
- Gwok yati maber kit ma latic yotkom otito kede.
- Gwoke ibutu pi gengo in nongo kwai kwidi two jonyo manyen ki two mukene mkobo ki rwate ibutu.



ROTO KA YATA TYE KA TIC MABER

PWONY ME GENGO, GWOKE KI NONGO YAT KWIDI TWO JONYO/AONA APIO



ROTO KA YATA TYE KA TIC MABER

PWONY ME GENGO, GWOKE KI NONGO YAT KWIDI TWO JONYO/AONA APIO

Yat lagin kwidi two jonyo ma okwero tic.

- Yat lagin ma kwero tic time ka inen lagin dong pe romo dwoko wel kwidi ping.

Yat romo kwero tic pi jami magi;

- Ka diyo cwiny pe
- Kit ma yat tiyo kwede
- Ka imunyu yat ma wele pe opore
- Nongo kwidi manyen ma pe winyo yat

Ngo ma time ka yat okwero tic ikomi?

- Rwom onyo wel kwidi cito lamal
- Askari kom ma dugu goro ki two mukene ma maki macalo aduki kwidi two jonyo
- Dul kom dano ma bale.

Rwom two kwidi jonyo ma mede(AHD)

Rwom kwidi two jonyo ka omede nongo askari kom (CD4) pe kato 200 dok ngat ma tye ka kwor ki kwidi two jonyo bedo ki two mukene matek ma bino calo adwoki me kwidi two jonyo.

Anga ma kare ne tye kere me nongo rwom kwidi two jonyo ma lamal?

- Lutwo manyen ki askari kom (CD4)ma pe kato 200
- Lutwo ma kwidi gii pe gino wiye.
- Lutwo matye ka dugu iyat inge dwe adek me tenyo yat.
- Lutino ma mwaka gi pe kato 5 ma gi pe iyat pi mwaka acel.

Ngo mito kitim?

Kipim lac onyo remo pi two nyonyo matek

Yat pi lutwo ma rwom kwidi gi omede tye menono dok nonge iot yat weng pa lutwo kwidi two jonyo.



NGO MUKENE MA MITE PI DANO MATYE KA KWOR KI KWIDI TWO JONYO?

PWONY ME GENGO, GWOKE KI NONGO YAT KWIDI TWO JONYO/AONA APIO



Cam ma dongo dano(nyig yen ki pot dek)

Cam me teko(cam ma miyo guvu)

Cam me dongo(protein ma aa ki ikom lee ki cam poto)

NGO MUKENE MA MITE PI DANO MATYE KA KWOR KI KWIDI TWO JONYO?

PWONY ME GENGO, GWOKE KI NONGO YAT KWIDI TWO JONYO/AONA APIO

Moc cam

Two jonyo yelo moc cam ki medo tic pa moc cam, dwoko rwom cam ping, balo kit ma kom cwiyo ki moc cam, peko ikit ma kom tiyo kede man kelo jonyo, moc cam me vitamin ki mineral ma bedo nok, moc cam ma pee ikom kelo mede pa two jonyo oyot dok kelo too.

Kwai cam ma pire tek ka itye iyat.

- Carbohydrates: cam ma miyo kero (Go foods) man tye iye: layata, layata munu, labolo kwon, kabii, kal, gwana, kwon ki anyogi.
- Proteins: cam ma dongo dano (Grow foods) man tye iye; cam ma aa ki ikom lee (ringu, gweno, rec, tongweno, cak) ki ikom cam poto: muranga, pul, soya bean.
- Nyig yen ki pot dek: cam ma gwoko kom (glow foods) tye iye; nyig yen calo mucungwa, muyeme, labolo abanga, paipai, nasinasi, okwe munu, ki olok.
- Pot dek: cabbage, ovuga, sukuma wik, nakati, carrot ki nyanya
- moo
- Gin amata (pii, juice...)

Lanyut me moc cam ma pe

- Bedo yot ma pe pore ki mwaka ni

- Goro ikom
- Inen ngat ma kome lit
- Dog ma goyo keno
- Cing, tyen ki wang ma kwot

Moc cam pi min latin ki latin:

- Cam maber ikare yacu ki inge nywal tutwale ka idoto latin, pire tek me gwoko min latin ki latine ma komgi yot.
- Cak doto latin ikin dakika 30 inge nywal.
- Mii ki latin cak kor ki yat kiken pi acaki dwe 6 labongo medo ki gin moo. rupu cak kor ki cam mukene medo kare matye kere it min latin me kobo kwidi two jonyo ki latin.
- Inge dwe 6, latic yotkom bimiyo tam ikit cam ango ma mito imii ki latin.

cam maber romo bedo ki;

- Mato jami amata madwong
- Camo nyig yen ki pot dek madwong.
- Tic ki kado munu maber pi gengo peko calo (nywal abwoki, jingo dongo pa latin, ki goitre pa min latin).
- Gwoko lengo me dek ki kom maber pi gengo nongo two.
- Camo dek matye iye vitamin C pi nongo iron ikomi.

Pe itim jami magi

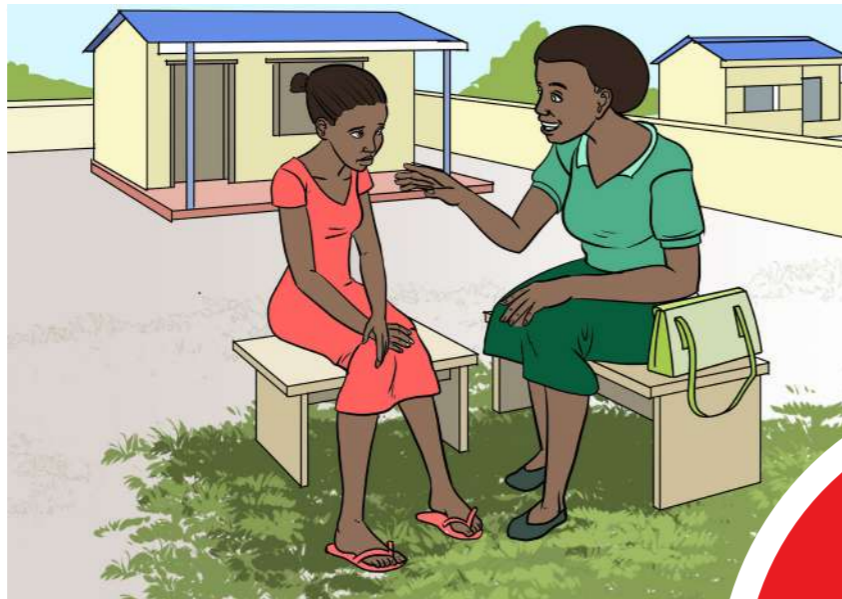
- Mato cai ki kawa ikin cawa acel onyo ki dek pien man romo balo tic pa iron ikomi.
- Mato kongo, taryat, ki yat ma latic yotkom aye pe oconi.



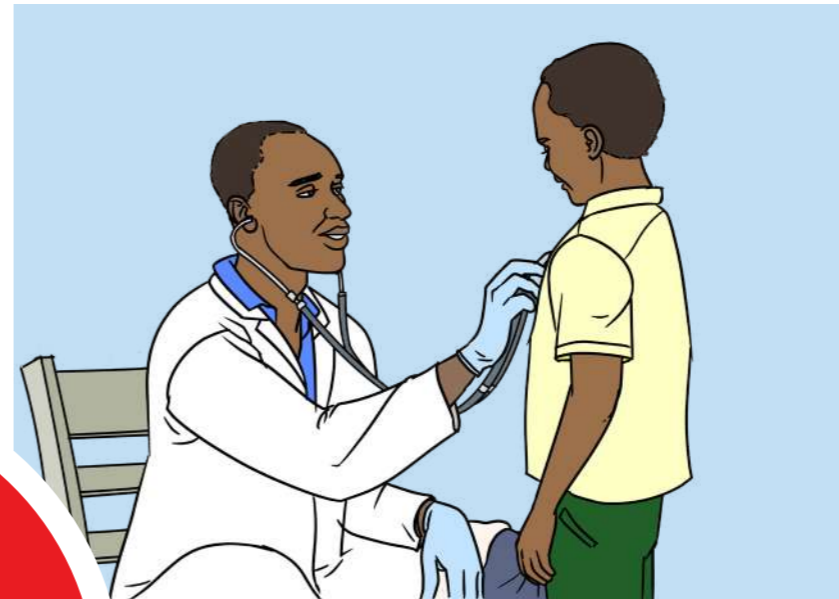
AROMO NONGO KONY MUKENE NINING MA PE KWAKO YAT?

PWONY ME GENGO, GWOKE KI NONGO YAT KWIDI TWO JONYO/AONA APIO

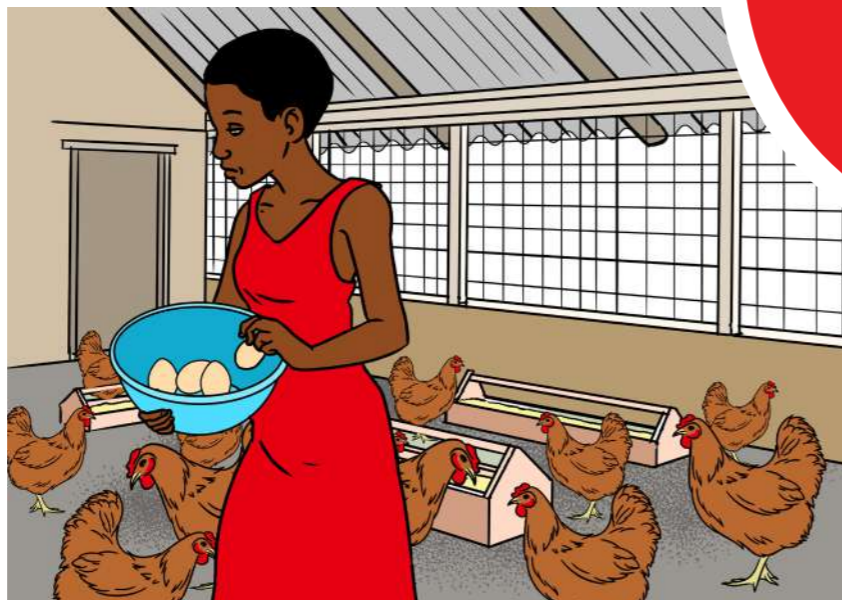
Ber



yotkom



Kare ki kare



Gang kwan



OVC

AROMO NONGO KONY MUKENE NINING MA PE KWAKO YAT?

PWONY ME GENGO, GWOKE KI NONGO YAT KWIDI TWO JONYO/AONA APIO

Ber bedo ki kony me kelo lim(OVC services)konyo mada me yilo rwom kwor ipaci ma lutino ki bulu tye ka kwor iye ki kwidi two jonyo.Man time ki mino kony ma weko kwor bedo ma opore dok mayot.

Man kwako ngo?

Ibinongo kony man ka icone:

1. yotkom

- Yeko ki kwango dano pi Pimo kwidi two jonyo pa lu gang me OVC.
- Yoo gengo two ma ki rubu pi lugang me OVC
- Mino kony me keto lugang me OVC ma tye ki kwidi two jonyo weng iyat.
- Kony me gwoko lengo ipaci.
- Kony me pim ki ma neno lok kom VAC ipaci
- kony me pwony ikom cam ma atir ki pur iteng gang.
- Ket lutic ikin dano me neno paci ma lutino ki bulu tye ka kwor iye ki kwidi two jonyo pi mino kony me jingo cwinygi me munyu yat ki gwoko nino dok iot yat.
- Limo gang cabit ki cabit it dano ma kwidi two jonyo gi pe ka winyo yat.
- Pwony ikom nongo yat

2.Gang kwan

- Mii kony me neni gii oduyo ikwan,kit ma kwan woto kwede,bedo igang kwan ki tyeko kwan.
- Link for apprenticeship and vocational skilling
- Kub gii pi kwan ma lamal ki tic cing.

3.Ber

- Mii kony malupe ki kwidi two jonyo/ Pwony ikit me gengo VAC
- Neno matir malupe ki VAC

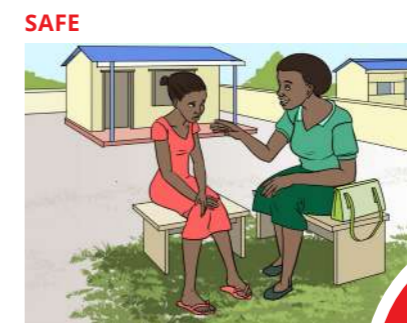
4.Kare ki kare

- Dongo lim icing dano ipacu ki cako boli cup.
- Pwony madok ikom lim
- Pwony ikom biacara ki pur ma kelo lim
- Kubu dano ki gang gwoko ki deno lim

Nga ma mito ocone?

1. Paci weng matye ki lutino onyo bulu matye ka kwor ki kwidi two jonyo (mwaka 0-17) romo cone.
2. Paci weng ma lutino kare gi tye kere me nongo kwidi two jonyo, bulu ki mege ma kwidi gi tye ka winyo yat.
3. Lutino pa mege ma cate ma tye ka kwor ki kwidi two jonyo.
4. Lutino ma oloyo ki igero.

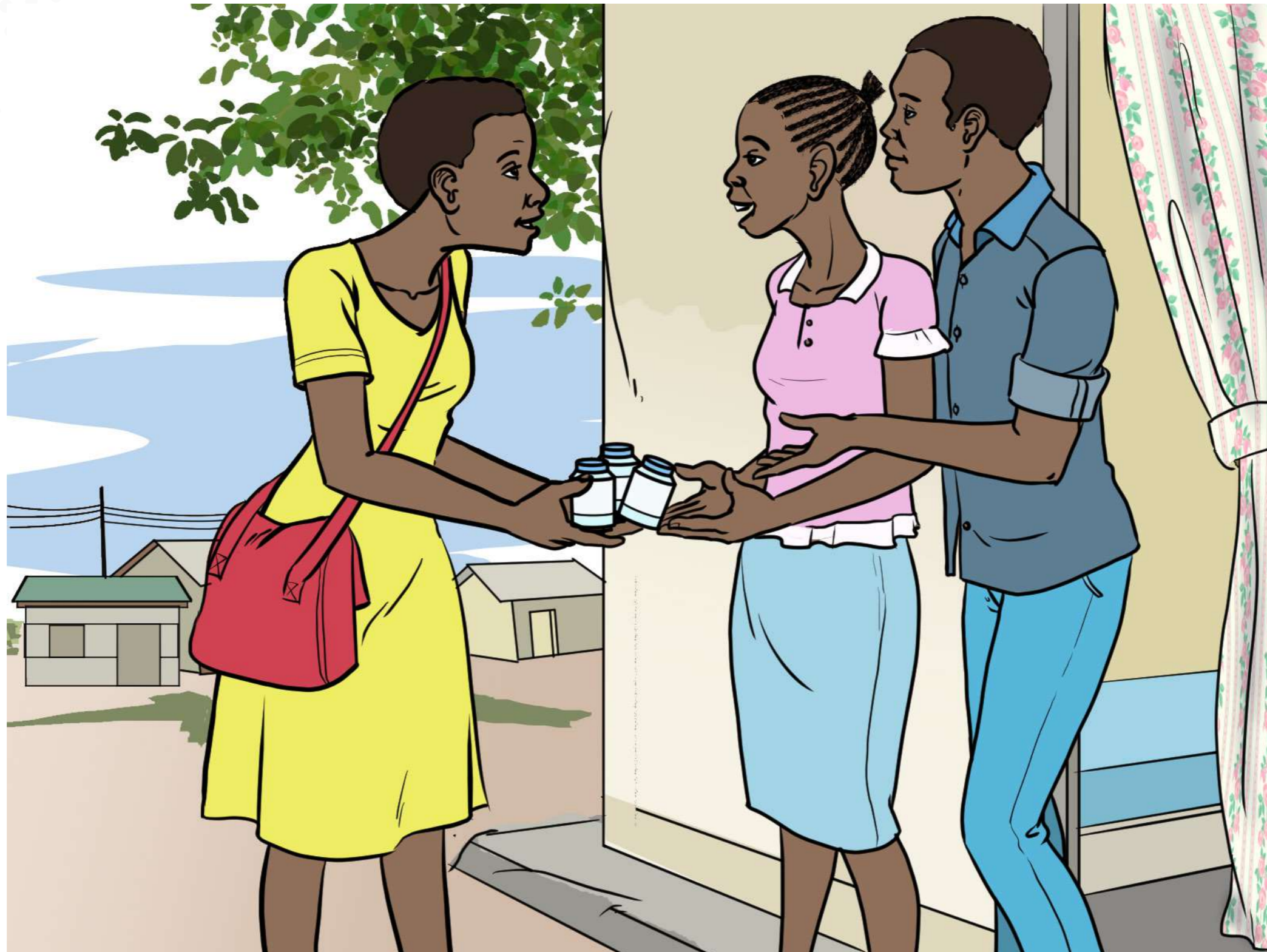
NB:Peny latic yotkom onyo latic me dongo gin gang,Community development worker (CDO) i sub county pi ngec matut ikit me nongo kony magi ducu.



OVC

AROMO NONGO KONY MUKENE NINING MA PE KWAKO YAT?

PWONY ME GENGO, GWOKE KI NONGO YAT KWIDI TWO JONYO/AONA APIO



AROMO NONGO KONY MUKENE NINING MA PE KWAKO YAT?

PWONY ME GENGO, GWOKE KI NONGO YAT KWIDI TWO JONYO/AONA APIO

Yero lanyut me gwok

Aromo gamo yata ki kwene?

Nwak tam kare ki kare ki latic yotkom ikom kit me nongo kony.kibimini kony malupe ki ngo ma opore kwedi,miti ni ki kit ma ki kwedo kede.Iromo gamo yati ki iot yat ki ikin gang.

NGO

- Donyo iyat/medo yat
- neno ki roto yotkom(pime ki doru Ols maber)
- Kanyo yat
- Pime ilaboratory(pimo wel kwidi ki CD4,)
- Kony me adam ki bedo ikin dano
- Pwonye igengo ki nongo yat

AWANE

- Dwe ki dve(joo ma oduonyo nyen iyat)
- Nge dve adek adek
- Nge dve abicel abicel.

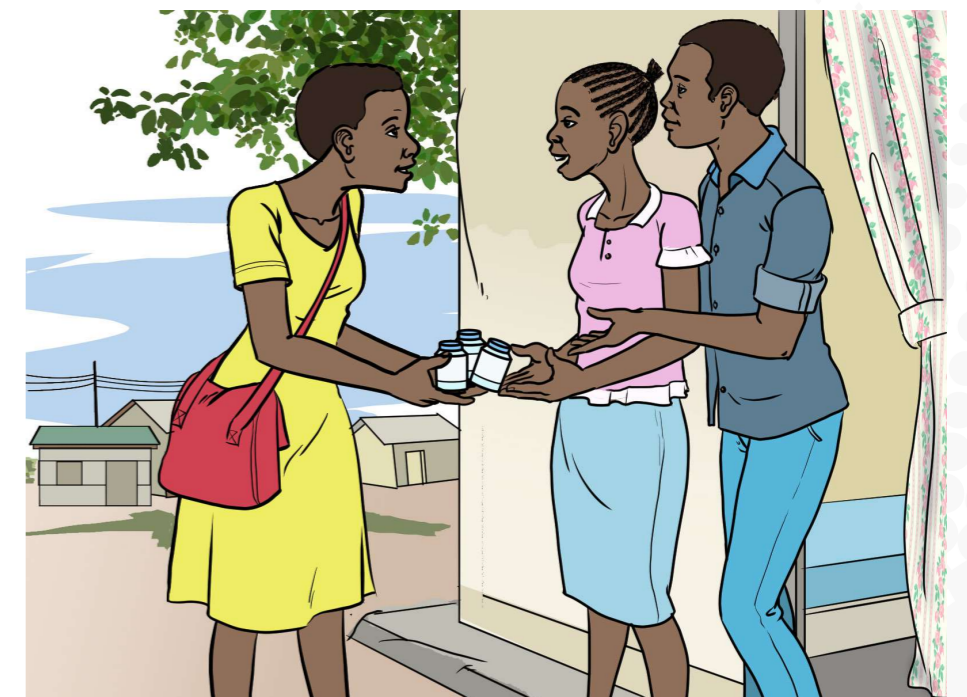
KWENE

- Iclinic/ot yat kwidi two jonyo
- Ikin gang calo ot cato yat ma ikin gang
- gang

Ngec: Iromo nongo kony calo in keni onyo dul dano iot yat onyo kin gang.

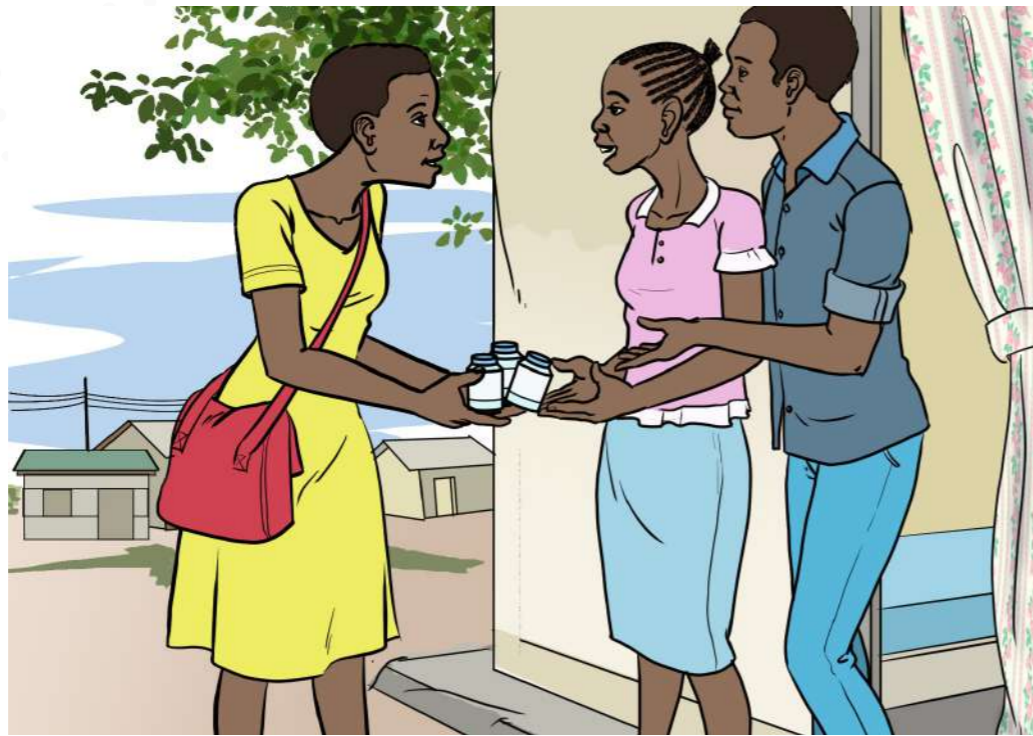
ANGA

- Dacta (Nurse,lacat yat,clinical officer,dacta madit)
- Lutic yotkom ma ikin gang
- Latwo/lurem/lu oot.



YOO MUKENE MA ATYE KWEDE AYE NGO?

PWONY ME GENGO, GWOKE KI NONGO YAT KWIDI TWO JONYO/AONA APIO



YOO MUKENE MA ATYE KWEDE AYE NGO?

PWONY ME GENGO, GWOKE KI NONGO YAT KWIDI TWO JONYO/AONA APIO

- Yat ma kimiyo pi dwe madwong. Man konyi me nongo yat pi dwe madwong dok weko idwoko ping kare ma icito kede iot yat weko pe ibalo cente ki cawa. man time bot lutwo ma tye kamunyu yat maber, yat ma igamo pi dwe madwong konyi me bedo ki yat ma oromo dok dwoko ping kare ma tye kere pi keng yat.
- Cak gurup onyo dul dano matye ka kwor igang kenyu onyo lurem ki kwidi two jonyo wek ole cito ka gamo yat ikin wuu.
- Nong yat lagin ni pi dwe madwong menono iot yat macok kwedi.
- Iromo bene nongo yati pi dwe madwong ikabedo ma kipoko iye yat ikin gang.
- lot yat calo gurup onyo dul dano, l nino ot yat/onyo atir ki iwang oot kama kigwoko iye yat.

NGEC: lok ki latic yotkom kare ki kare ka imito loko lamini kony.



TYELO KOR YAT MA AMUNYU

PWONY ME GENGO, GWOKE KI NONGO YAT KWIDI TWO JONYO/AONA APIO



TYELO KOR YAT MA AMUNYU

PWONY ME GENGO, GWOKE KI NONGO YAT KWIDI TWO JONYO/AONA APIO

Waco lok atir ni atye ka kwor ki kwidi two jonyo

- Kati kamaleng aye yoo me Waco ni itye ka kwor ki kwidi two jonyo ka imoko dok iyero me Waco ne it dano ma obikonyi me kwor maber.
- Obedo tami dok dic pee me waco pi two ni, kikene ka obedo mok pa lapilida pi in me kati atir.

Ngo ma mite ikare kati atir.

- Kati atir obedo tam ma tero cawa dok pe tic me nino acel.
- Kati atir pe mito rune
- Kati atir mito pulan
- Mito ikati atir bot ngat ma igeno
- Mito kong iyup jami ma kengo kati atir
- Nong kama iromo nongo iye kony,calo gurup kony pa dano matye ka kwor ki kwidi two jonyo,ludini,ki dul mino tam.
- Nen ka iromo kati atir onyo imito kony ki bot lamii kony.
- Yupe me nongo lok ma rac onyo maber malube ki kati atir.

Ber pa kati atir

- Kati atir konyi me yee kit ma remo ni tye kwede.
- Kati atir konyo me nongo kony me yotkom ki gwok ma imito.
- Kati atir konyo me gwoko dano ki joo mukene ma imaro ki nongo kwidi me two jonyo.
- Kati atir konyo me laro lok pi rwate ibutu ma ogwoke.
- Cimo tok,apokapoka ki kwero niang ikom kwidi two jonyo/cilim dugu ping.
- Dwoko ping par ma bino calo adwoki me gwoko mung.
- Medo kwiri; konyo in ki dano ma imaro me me yupe pi anyim.
- Dano ma kati atir pol kare nongo maa ikin dano,mare kekengi,par dok ping ki medo miti me rwate ibutu ki latoo gi.
- Kati atir bino ki magoba calo yotkom ki dwoko ping geng iot yat kwidi two jonyo, komi winyo yat ka ibedo ki kero me kanyo yat bene.
- Medo kube ki lumii kony,wadi pa lutwo ki mukene madwong..

Dano kwor nining ki par ma bino calo aduki me kati atir?

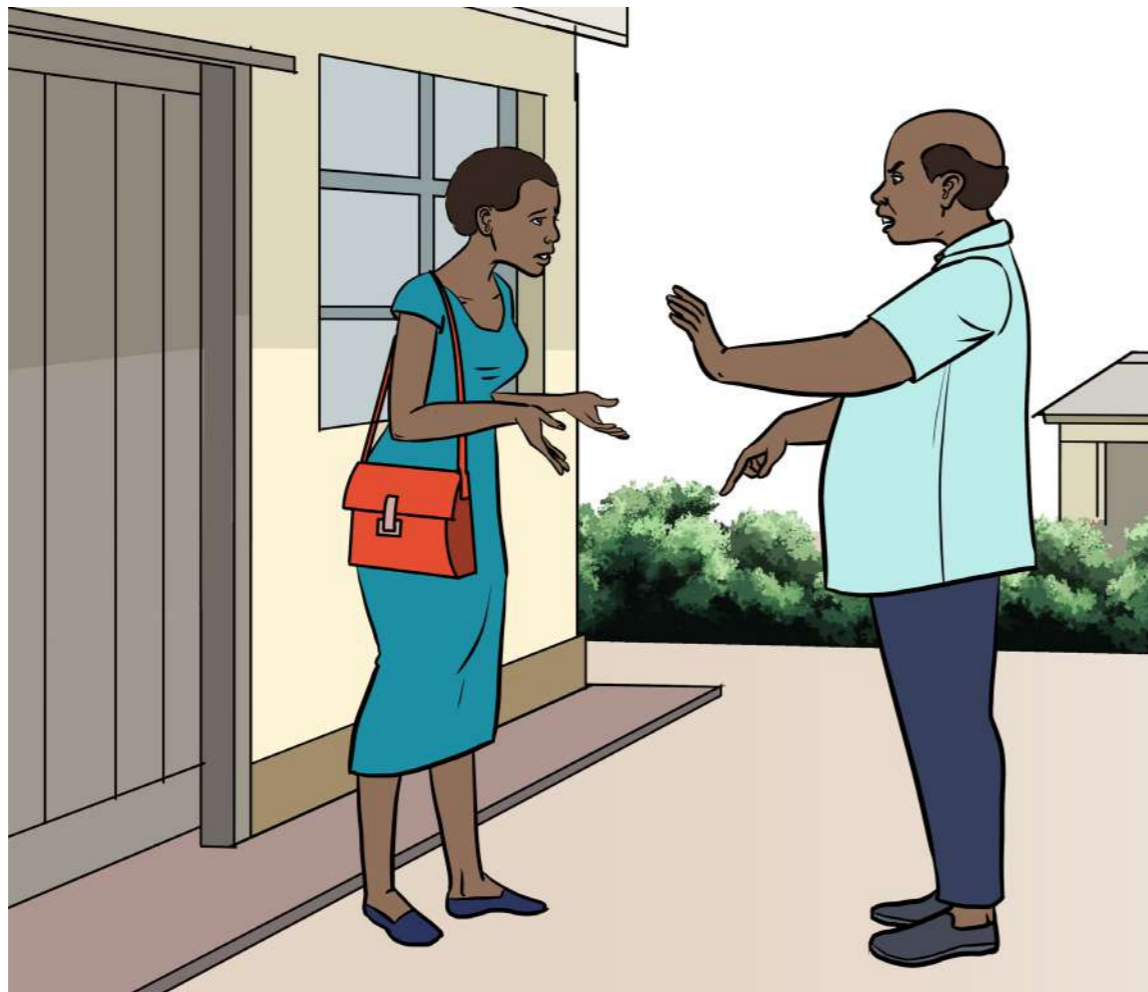
Ka iyee me kati atir onyo me kano mung onyo kati ma pe obedo miti ni,pire tek ni iyeny yoo maber me kwor ki kiniga onyo par.Yoo magi aye;

- wer
- lega
- Wot mabor
- Bedo kacel ki lugangi onyo lurem
- Donyo igurup onyo dul dano ma miyo kony
- Lok ki lamii tam



NGO MA ROMO BEDO ARIYA INONGO YATA?

PWONY ME GENGO, GWOKE KI NONGO YAT KWIDI TWO JONYO/AONA APIO



NGO MA ROMO BEDO ARIYA INONGO YATA?

PWONY ME GENGO, GWOKE KI NONGO YAT KWIDI TWO JONYO/AONA APIO

Geroo ma gang

Man obedo gero me lweny,rwate ibutu,lok kom lim ki gero ma yelo adam ma ngat acel onyo dul pa dano nongo malupe ki ngo ma dano tamo ikom coo/awobe ki mon/anyira,kit ma miro gii okwor,ngo ma mito gi otim ki pe mito gi otim,rwom gi ki mukene madwong.

Gero (GBV) bino iyoo abic,calo;

- Gero lweny calo goyo dano
- Gero rwate ibutu calo mako dano tek tek, pyedo latin,butu ki ngat ma mwaka ne pe kato 18,butu ki wat,gudu kom dano ma pe opore,cato kom tektek ki kwalo dano.
- Tic tee kwaro ma pe opore calo liro nyim mon,nyom con ki dic,lako daa too ki gero ma bino macalo adwoki me cente nyom.
- Gero me lim calo gengo dano bedo ki jami ne ma kelo lim icinge.
- Gero ma kelo arem cwiny ki adam calo yet,cac,ki loro wii ngat moni ikabedo acel onyo ot.

Dano ma oloyo ki igero ma gang mito:

- Ki tee gi pi pim iot yat.
- Tam me konyo yubu adam
- Kony pa lupilida ki tam
- Kony me gwoko latin (calo.kwanyo ne aruya ki igang gii,mino kony ma mite pi gang,moko tam matwala ka inen dwoko ne gang pe lare
- Keto lim icing
- Kabedo pi oyoto.



NGO MA ROMO BEDO ARIYA INONGO YATA?

PWONY ME GENGO, GWOKE KI NONGO YAT KWIDI TWO JONYO/AONA APIO



NGO MA ROMO BEDO ARIYA INONGO YATA?

PWONY ME GENGO, GWOKE KI NONGO YAT KWIDI TWO JONYO/AONA APIO

Ngo ma obedo cimo tok ki apokapoka?

- Cimo tok obedo lewic ma bino calo adwoki me timo jami ma pe rwate ikin gang.dano ma kicimo tokgi kineno gii calo dano mapat dok ki keto bal meno iwii gii.
- Apokapoka aye tero ngat moni mapat ki lawote iyoo ma pe opore calo tero ngat moni mapat pien en tye ki kwidi two jonyo.

Ngo ma kelo cimo tok ikom dano matye ka kwor ki kwidi two jonyo?

Jami adek ma kelo cimo tok ikom dano matye ka kwor ki kwidi two jonyo aye:

- Niang ki ngec ma pee ikom cimo tok ki apokapoka
- Lworo me nongo kwidi two jonyo ki bot latwo ikit kwor me bedo kacel jwir.
- Kit kwor ma kelo tam ni kwor ki kwidi two jonyo obedo gin marac dok pe opore;man kelo apokapoka

Ngo maromo bedo kwai cimo tok?

Kwai cimo tok malupe ki kwidi two jonyo ikin gang aye;

- Kwai cimo tok malupe ki kwidi two jonyo ikin gang aye;
- Ngat ma balo cente,guvu ki cawa ne me cito iot yat ma bor pi nongo yat ne me dwe,lworo ni luwote obinene ka icito iot yat macok.
- Dacta ma pime ka mine yat kekene, ka pe kati atir me waco ne bot ngat moo kiken kit ma remo ne tye kede pi lworo me rwenyo dog tice.
- Dako ma kivuru ki gero dok lugange kwanyo jami nee ka okati atir.
- Gang kwan ma weko lutino kic rye pat ki luwot gi, labongo tamo pi adwoki me dii bar tuku.

- Lacat nyanya ma luwil lworo will kibote pi lworo me kobo kwidi two jonyo.
- Latic pa rubanga ma tiku pwony cabit weng ni kwidi two jonyo obedo pwod ma rubanga miyo ki lubal.



NGO MA ROMO BEDO ARIYA INONGO YATA?

PWONY ME GENGO, GWOKE KI NONGO YAT KWIDI TWO JONYO/AONA APIO



NGO MA ROMO BEDO ARIYA INONGO YATA?

PWONY ME GENGO, GWOKE KI NONGO YAT KWIDI TWO JONYO/AONA APIO

Rac pa cimo tok aye ngo?

- Pi ngat acel,cimo tok romo bedo rwenyo kony pa ngat ma igang,bedo ki lawic,cimo bal iwii, ki rwenyo maa ikomi.romo bene bedo rweny pa gin ma keli kwor tutwale ka ogudu tici.
- Cimo tok bene yelo Dog ot.
 - Lutino matye ka kwor ki kwidi two jonyo ki lutino kic ki poko gi,pe ki tamo pi gin,onyo kiminigi pwod matek kato joo mukene ma gang,onyo geng cito igang kwan ki tic mukene.
 - kwidi two jonyo kobo ki bot dako bot lacoo onyo lacoo bot dako pi lworo me kati atir.
 - Wa kati ki tam me tic ki rocbol iwinye romo kelo tam ki byek.
- Rac pa cimo tok romo nen ikin gang wa irwom ma malo me lobo.
 - Cimo tok gengo dano cito ka pime pi kwidi two jonyo ki nongo yat.
 - Cimo tok dwoko kare me kwor ping pien pime,nongo two ki nongo yat gale.
 - Cimo tok bene balo kanyo yat.
 - Ka inen dano tye ki lworo me kati atir ikom kwidi two jonyo bot lu ot gi,lurem pi cimo tok,man romo kelo kano yat ki keng yat.

Waromo lweny nining ikom cimo tok ikin gang?

- Dano ma kwor ki kwidi two jonyo kijingo cwinygi me kati atir bot joo ma gi maro,latoo gi,joo ot gi ki lurem.gi romo konyi ikit me kwor,ki diyo cwinyi me kanyo yat
- Dano ma kwor ki kwidi two jonyo kidiyo cwinygi me donyo igurup.
- Lugang,lurem,gangkwan,opok tic,lutic yotkom ki lukin gang mito ojuk cimo tok dano matye ka kwor ki kwidi two jonyo ento mito kimini gi kony ma opore wek gi okany munyu yat.



AROMO LWENY NINING IKOM TWO MABINO CALO ADWOKI ME KWIDI TWO JONYO?

PWONY ME GENGO, GWOKE KI NONGO YAT KWIDI TWO JONYO/AONA APIO



AROMO LWENY NINING IKOM TWO MABINO CALO ADWOKI ME KWIDI TWO JONYO?

PWONY ME GENGO, GWOKE KI NONGO YAT KWIDI TWO JONYO/AONA APIO

AONA APIO

- Aona Apio obedo two ma kwidi ma lwenyo ibor kelo, ento bene romo donyo l dul kom dano mukene calo cogo, motkom, cine dano, delkom ki adam.
- Obedo two ma loyo ineko ki kelo two ikom dano ma tye ka kwor ki kwidi two jonyo.
- Aona Apio kobo ki iyamo ikin dano.
- Aona Apio cang ka imunyu yat ma opore pi kare ma opore. Ento ka pe imunyu yat maber, romo ngiyo ki yat ci kelo too.

Ngo matye lanyut me Aona Apio?

Dano ma tye ki Aona Apio tye ki lanyut magi.

- Aona pi kare moo kiken
- lyeto
- Kwok idiwor
- jonyo
- Kilo ma mede mot ki bedo cok ki latwo aona Apio tutwale lutino

Nyik lok ma kwako kwidi two Jonyo ki Aona Apio

Aona Apio ki kwidi two jonyo perom, ento pol kare ngat matye ki two acel maro bedo ki mukene.

- Iromo bedo ki Aona Apio kiken
- Iromo bedo ki kwidi two jonyo kiken
- Iromo bedo ki kwidi two jonyo ki Aona Apio weng.

Dano weng matye ka kwor ki kwidi two jonyo mito opime pi Aona Apio kare ki kare dok dano weng matye ki Aona Apio mito opime pi kwidi two jonyo.

Aona Apio kipimo nining?

- Pimo aona (ki ilaboratory kun kitiyo ki Aona onyo ki pimo lac)
- Ingec pa dacta (dacta roto ki ngec ma en tye kede me niang ka itye ki Aona Apio).
- Maraya

Aona Apio ki cango nining?

- Kimunyu yat pi dwe abicel (6) onyo makato malupe ki kit ma ki coyo kede.

Igengo Aona Apio nining?

- Munyu yat ma gengo Aona Apio (TB Preventive Therapy) obedo munyu yat me gengo in nongo Aona Apio ka itye ka kwor ki kwidi two jonyo.
- Oum dogi ka itye ka ono
- Pe ibed ikabedo ma dano dwong iye.

- Neni yamo donyo maber iot ki yabo wang ot ki dogola ka itye ki Aona Apio.
- Pe ingul laa ikin dano, bol Aona kama bor l coron, wii odur onyo um ki ngom.
- Ruk labo dok ki um wang ma latic yotkom ojuki pe gengo kobo two ki joo mukene.
- Gwe latini inge nywalo ne.

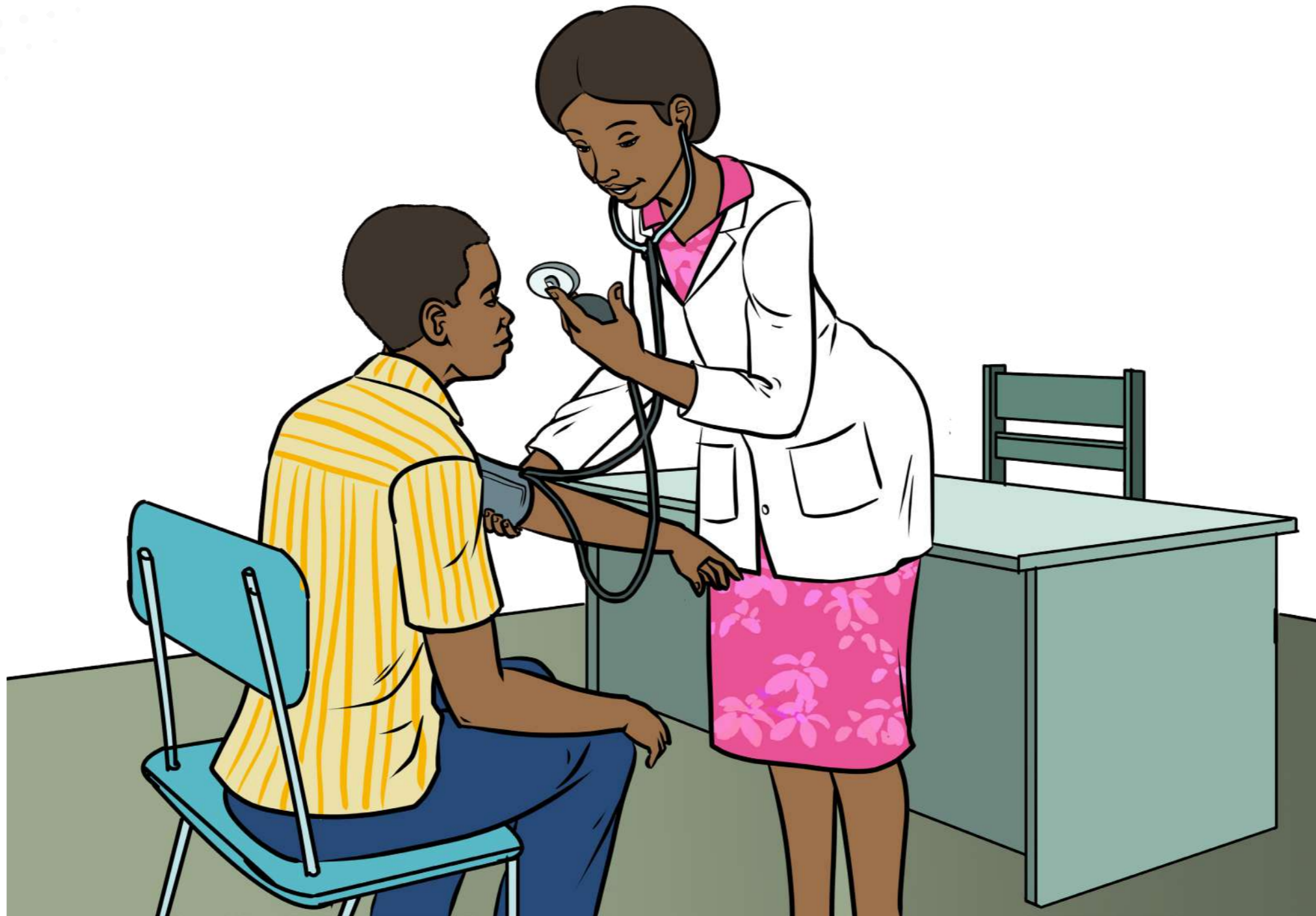
Katala ni obedo ngo macalo dano?

- Cit iot yat ka ineno lanyut magi.
- Kwang dano ma cok kwedi ka itye ki Aona Apio onyo dano matye ki lanyut me Aona Apio ikin gang iot yat.
- Mi kony me nongo yat bot dano matye iyat Aona ki poyo wii gi me munyu yat maber.
- pwony me yotkom



AROMO LWENY NINING IKOM TWO MABINO CALO ADWOKI ME KWIDI TWO JONYO?

PWONY ME GENGO, GWOKE KI NONGO YAT KWIDI TWO JONYO/AONA APIO



AROMO LWENY NINING IKOM TWO MABINO CALO ADWOKI ME KWIDI TWO JONYO?

PWONY ME GENGO, GWOKE KI NONGO YAT KWIDI TWO JONYO/AONA APIO

Man aye two ma pe kobo ki bot dano lawoti.

TWO PRESSURE MA LAMAL.

- Pressure obedo two ma weko remo woto ki teko ilee.pressure ma kato 140/90mmHg romo dugu two pressure.

Lanyut me pressure aye ngo?

- Abarwic
- Wang ma ume ki neno jami ariyo ariyo
- Arem kor
- Yweyo matek

NGEC: Dano romo bedo ki pressure labongo lanyut magi

Iromo gengo ki doru pressure nining?

- Cam cam maber ma opore calo pot dek, cam ma nyige, nyig yat, rec ki mukene.
- Dwok rwom kado ma icamo
- Bed ki kilo ma rwate
- Maa timo exercise.
- Teny mato taa
- Juk mato kongo madwong
- Juk tam madwong

TWO SUKARI

Two sukari obedo two ma bino macalo adwoki me sukari madwong ma bedo iremo ma balo lee ma remo woto ki iye.

Kwidi two jonyo romo balo tako ma tice obedo kwanyo sukari madwong ki iremo.pire tek ni imuny yati me dwoko ping kwidi ma ikomi wek tako ni bene oti maber.

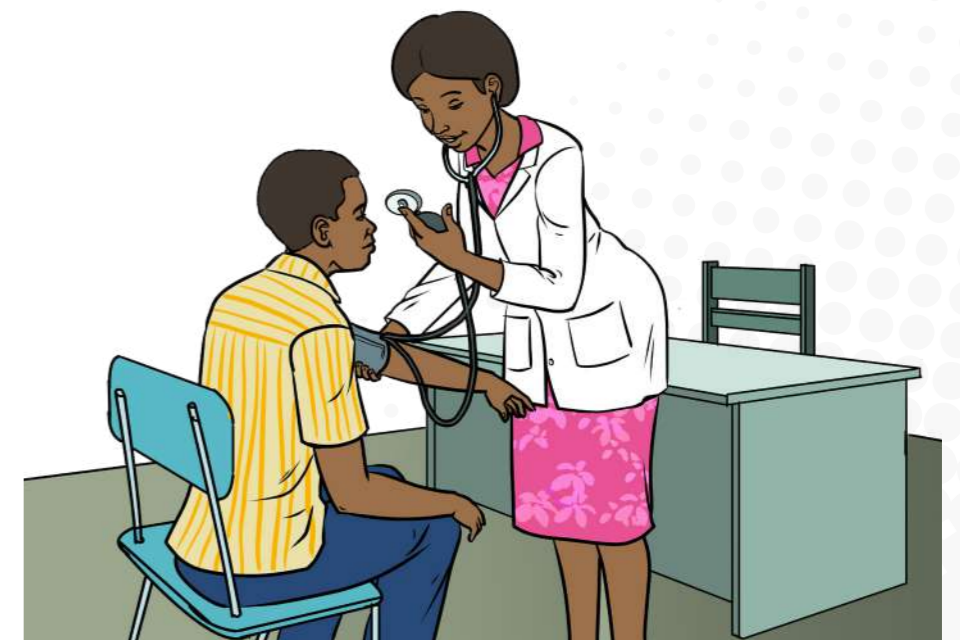
Lanyut me two sukari aye ngo?

Two man pe ki lanyut ka fud cake acaka en gin ma oweko kiwaco ni neki laling.Ento,iagiki ne lanyut romo bedo magi;

- Lac teretere
- Orwo pii cawa weng
- Kec cawa weng ki jonyo matek
- Two teretere ki bur ma cang mot.

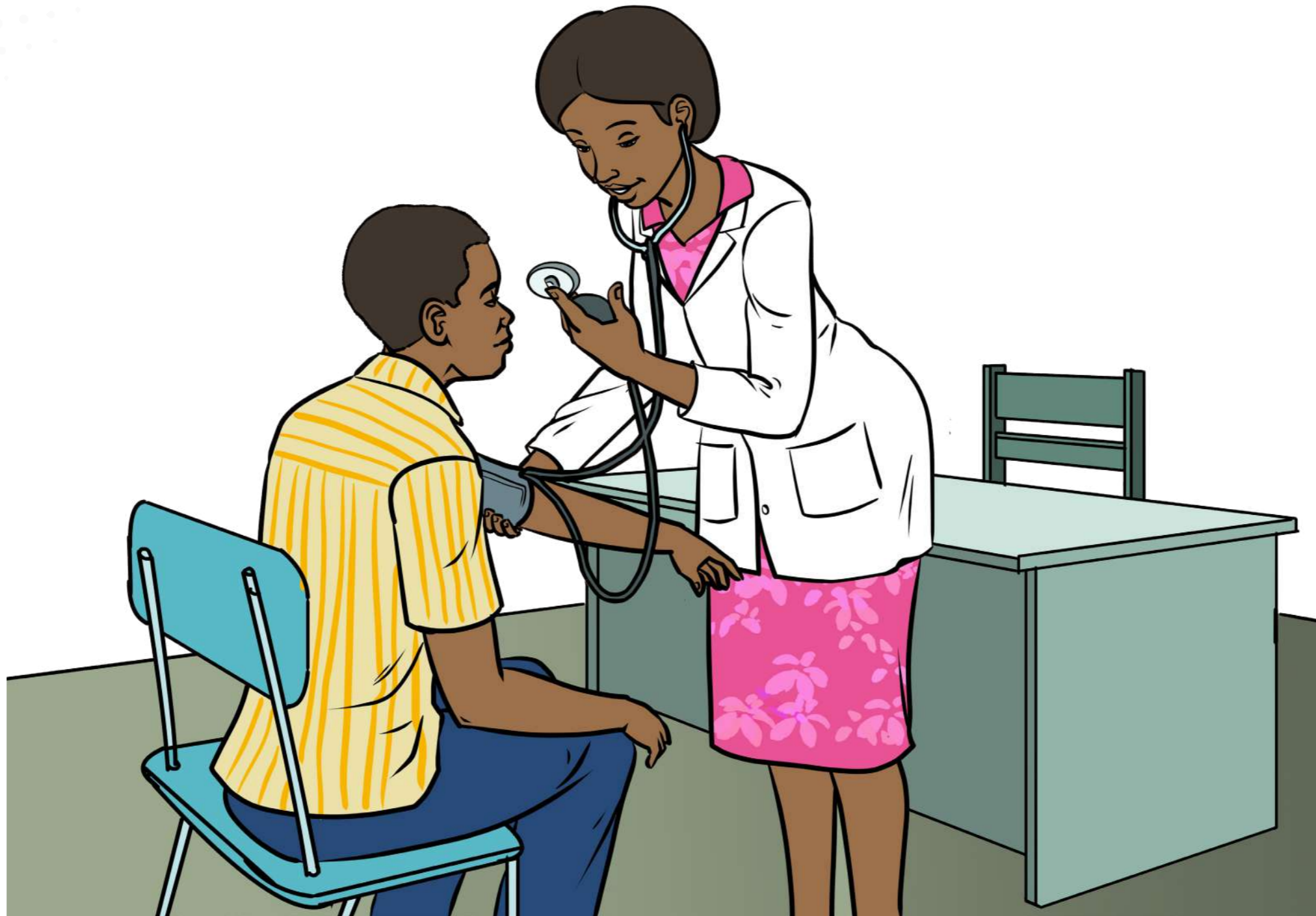
Iromo gengo ne nining?

- Cam cam ma opore calo pot dek, cam ma nyige,nyig yat,rec ki mukene.
- Dwok sukari ma imato ping
- Bed ki kilo ma opore
- Maa timo exercise
- Juk mato tar



AROMO LWENY NINING IKOM TWO MABINO CALO ADWOKI ME KWIDI TWO JONYO?

PWONY ME GENGO, GWOKE KI NONGO YAT KWIDI TWO JONYO/AONA APIO



AROMO LWENY NINING IKOM TWO MABINO CALO ADWOKI ME KWIDI TWO JONYO?

PWONY ME GENGO, GWOKE KI NONGO YAT KWIDI TWO JONYO/AONA APIO

TWO TAM KI APAR MADWONG (TWO ADAM)

Two adam yelo kit ma ngat moni tamo kede onyo winyo dok romo balo kit ma ngat moni bedo ki luwote onyo timo tice. Yelo kit ma iwinyo kede, itamo ki kit ma idore kede. man romo kelo bal ikomi iyoo madwong.

Lanyut me two tam ikin dano matye ka kwor ki kwidi two jonyo;

- Bedo ma ii cwe, koko, bedo kekeni labongo gen
- Ture ki kiniga, nget cwiny ikom lok ma tino.
- Rwenyo miti onyo maa ikom jami ma yomo cwiny dano calo rwate ibutu, timo gin ma imaro ki tuku.
- Ayela inino calo nino ma rwenyo onyo nino tutwal.
- Oolo onyo kero ma tumo, wa timo jami manok tero kero madwong.
- Dog ma goyo keno, jonyo, miti matek pi dek moni ki cweyo.
- Myel kom, ki malee .
- Tam mot, lok ki kom ma woto.
- Tam ni konyi pee, ki poto cwiny, cime kekini pi jami ma pe ocope ikare ma okato anged.
- Peko itam, peko imoko tam ki wil wic.

- Tam me too ma bino iwii kare ki kare, tam me dene, temo dene ki dene.
- Goro ma pe iniang iye calo arem ingec ki abarwic.

Kit me konyo dano matye ka kwor ki kwidi two jonyo ki two wic

- Kube ki lurem med ki lu oot bot dano mukene.
- Tam ikit me kwor ki dano maber
- Cam maber
- Mino kony me cwiny
- Kubu dano pi kony matir ma rwom ne lamal iot yat onyo igang nongo kony.

CANCER ME DOG OT NYODO

Cancer me dog ot nyodo yelo dog ot nyodo pa mon (cervix). coo pe ki dog ot nyodo, pi meno, mon kiken aye romo nongo cancer man. cancer me dog ot nyodo bino calo adwoki me kwidi (HPV) Human Papilloma Virus. kwidi man kobo ki rwate ibutu, mon ma rwate ibutu labongo gwoke con imwaka gii me tino keto kwor gii kama rac me nongo kwidi man ma loke dugu cancer me dog ot nyodo.

Kit me dwoko kare ma tye kere pi nongo kwidi HPV ki Cancer me dog ot nyodo.

- Bed ma pe irwate ibutu.

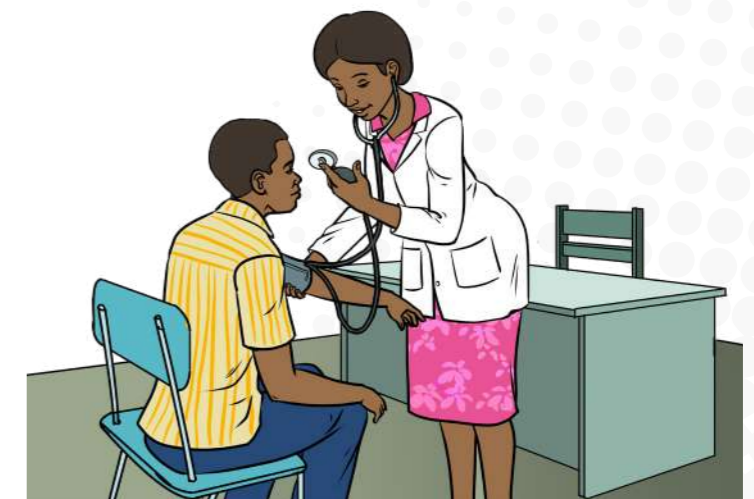
- Tii ki rocbol kare ki kare
- Pe irwate ibutu
- Pime kare ki kare pi cancer me dog ot nyodo.
- Agwera pi anyira weng.

Gengo cancer me dog ot nyodo.

Cancer me dog ot nyodo romo genge ki gwero anyira weng ikom Kwidi HPV.

Pimo cancer me dog ot nyodo kare ki kare pi mon gengo cancer man dok gwoko kwor.

Mon ma kwor ki kwidi two jonyo mito opime mwaka ki mwaka pi cancer me dog ot nyodo ka gii oo mwaka 25.





USAID
FROM THE AMERICAN PEOPLE



UGANDANS AND AMERICANS
IN PARTNERSHIP TO FIGHT HIV/AIDS

Obulamu?